



RECON ATTACHMENTS

MINI SKID STEER POWER RAKE

OWNER'S OPERATOR SERVICE MANUAL

For additional information, please see us at

www.badboycountry.com



Owners/Operators Manual

Model Number _____

Serial Number _____

Serial Numbers 309005 and Greater
Date Created 05/07/26
Revised Date 05/07/26

Warranty Statement

1. WHAT THIS WARRANTY COVERS, AND FOR HOW LONG:

Bad Boy Mowers, LLC will, at its option, repair or replace without charge, any part covered by the warranty which is found to be defective in material and/or workmanship for one (1) year after the date of sale to the original retail purchaser **unless the product is used for rental purposes, in which case there is no warranty.**

At Bad Boy Mowers, LLC's request, customer will make the defective part available for inspection by Bad Boy Mowers, LLC and/or return the defective part to Bad Boy Mowers, LLC, with **transportation charges prepaid.**

2. WHAT THIS WARRANTY DOES NOT COVER:

- A. This warranty does not cover defects caused by depreciation or damage caused by normal wear, accidents, improper maintenance, improper use or abuse of the product, alterations, or failure to follow the instructions contained in the Owner's Manual for operation and maintenance.
- B. The customer shall pay any charges for making service calls and/or for transporting the implement to and from the place where the inspection and/or warranty work is performed. Bad Boy Mowers, LLC will not be responsible for the pickup and delivery of the implement for warranty purposes.
- C. Normal maintenance services or normal deterioration of exterior finish due to use or exposure.
- D. Replacement of services and items are subject to normal service replacement.

3. HOW TO OBTAIN SERVICE UNDER THIS WARRANTY:

- A. Warranty service can be arranged by contacting the dealer where you purchased the implement or by sending an email to warranty@badboycountry.com. Proof of the date of purchase may be required to verify warranty coverage. Warranty repairs must be completed by an authorized Bad Boy center.
- B. Warranty claims will not be reviewed or paid unless the warranty registration is received by Bad Boy Mowers, LLC within 30 days of the retail purchase date.
- C. Warranty claims requiring parts returned will be settled upon return of parts to Bad Boy for inspection.
- D. All warranty issues must be handled through an authorized service center or dealership.

4. **WARRANTY LIMITATION:**

A. **THERE IS NO OTHER EXPRESS WARRANTY. ANY WARRANTY THAT MAY BE IMPLIED FROM THIS PURCHASE, INCLUDING MERCHANTABILITY AND FITNESS FOR A PARTICULAR PURPOSE IS HEREBY LIMITED TO THE DURATION OF THIS WARRANTY AND TO THE EXTENT PERMITTED BY LAW. ANY AND ALL IMPLIED WARRANTIES ARE EXCLUDED.** Some states do not allow limitations on how long an implied warranty lasts, so the above limitations may not apply to you.

B. **BAD BOY MOWERS, LLC WILL NOT BE LIABLE FOR ANY INCIDENTAL, CONSEQUENTIAL, OR SPECIAL DAMAGES AND/OR EXPENSES IN CONNECTION WITH THE PURCHASE OR USE OF THE IMPLEMENT.** Some states do not allow the exclusion or limitation of incidental or consequential damages, so the above limitation(s) or exclusion(s) may not apply to you.

C. Only the warranty expressed in this limited warranty shall apply and no dealer, distributor, or individual is authorized to amend, modify, or extend this warranty in any way. Accordingly, additional statements such as dealer advertising or presentations, whether oral or written, do not constitute warranties by Bad Boy Mowers, LLC and should not be relied on.

D. This warranty extends only to implement operated under normal conditions and properly serviced and maintained. The warranty expressly does not cover (i) any defects, damage, or deterioration due to normal use, wear and tear, or exposure; (ii) normal maintenance services; (iii) damage or defects arising out of or relating to misuse, neglect, alteration, negligence, or accident; (v) repair or replacement arising from operation of or use of the implement which is not in accordance with operating instructions as specified in the Operator's Manual or other operational instructions provided by Bad Boy Mowers, LLC; (vi) repair or replacement arising as a result of any operation from implement that has been altered or modified so as to, indetermination of Bad Boy Mowers, LLC, adversely affect the operation, performance, or durability of the implement or that has altered, modified, or affected the implement so as to change the intended use of the product; (vii) repair or replacement necessitated by use of parts, accessories, or supplies, including gasoline, oil, or lubricants that are incompatible with the implement or other than as recommended in the Operator's Manual or other operational instructions provided by Bad Boy Mowers, LLC; (viii) repairs or replacements resulting from parts or accessories which have

adversely affected the operation, performance, or durability of the implement; or (ix) damage or defects due to or arising out of repair of implement by person or persons other than an authorized Bad Boy Mowers, LLC service dealer or the installation of parts other than genuine Bad Boy Mowers, LLC recommended parts. **As a condition of this warranty, customer shall have read the Operator's Manual and ensured the implement has been registered within 30 days of purchase.**

- E. This warranty gives you specific legal rights, and you may also have other rights, which vary from state to state.

**BAD BOY MOWERS, LLC
102 INDUSTRIAL DRIVE
BATESVILLE, AR 72501**

WWW.BADBOYCOUNTRY.COM

Technical Support:.....techsupport@badboycountry.com
Warranty:.....warranty@badboycountry.com
Parts:.....partsdept@badboycountry.com

Warranty Registration

Ensure selling dealership has registered the implement within 30 days of purchase to validate warranty. Please record the serial number, date of purchase, and dealership information for your records.

Serial # _____

Date of Purchase _____

Dealer Information _____

Features of Bad Boy Mini Skid Steer Power Rake include:

- Floating design produces a smooth finish while still allowing down pressure to be applied when desired.
- Bi-directional operation allows the Mini Skid Steer Power Rake to be operated either forward or backward. Toolless Mini Skid Steer Power Rake wings can be positioned for forward or backward operation.
- Left or right angling of 25°.
- Standard carbide tipped teeth work in many soil conditions.
- Solid urethane filled tires eliminate down time due to flats.
- Toolless removable caster tire arms and toolless tire height adjustment.
- Optional Hydraulic Angle with Electric Control utilizes either the machines electrical package or an add-on control box.
- Optional Hydraulic Angle for loaders with two auxiliary circuits.
- 10 – 18 gpm operating flow rate range and 2000 – 3800 psi operating pressure range.
- Direct drive design with replaceable drive components.
- Recommended for loaders with operating capacity greater than 515 lb.

Mini Skid Steer Power Rake Specs


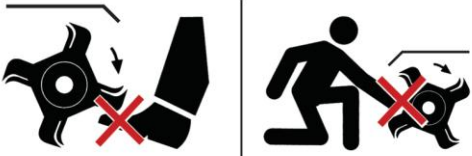
MODEL	CPR48	CPR60
Raking Width (Inches)	48.0	60.0
Raking Width at Full Angle (Inches)	44.0	54.2
Overall Width (Inches)	56.0	68.0
Recommended Flow Rate (GPM)	10-18 Standard Flow Only	
Approximate Weight (Pounds)	520 ¹	565 ¹
Recommended Loader Capacity	Greater than 515 pounds	

¹Bobcat® mount adds 25 pounds to model weight, and ASV® mount adds approximately 30 pounds.


Safety

- Always follow safety and operating information in this manual.
- Always follow all safety and operating instructions of the loader.
- Never remove material deflectors or warning labels.
- Make sure all safety labels are in place, look in “Mini Skid Steer Power Rake Labels” section in this manual for their locations.
- Do not operate throwing debris toward people, buildings, etc. that may be injured or damaged by flying debris.
- Clean any debris from attachment. Pay special attention to any debris in quick-tach area.
- Never operate Mini Skid Steer Power Rake unless you have been properly trained.

Mini Skid Steer Power Rake Labels

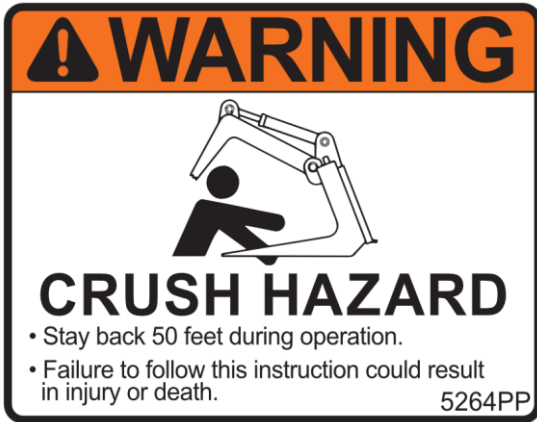
⚠ DANGER	
 <p>FLYING OBJECT HAZARD</p> <ul style="list-style-type: none"> • Keep bystanders 50 feet away during operation. • Avoid or remove objects that could be thrown. • Do not operate without all guards properly installed. • Failure to follow these instructions could result in injury or death. 	 <p style="text-align: center;">ROTATIONAL HAZARD</p> <ul style="list-style-type: none"> • Keep hands and feet away from Power Rake while in operation or with engine running. • Stop engine and wait for all movement to stop before cleaning or maintaining. • See additional safety and operational instructions in Owner's Manual. • Failure to follow these instructions could result in injury or death.
10359PP	

10359PP – POWER RAKE DANGER LABEL

⚠ WARNING	
<ul style="list-style-type: none"> • NEVER use hands to check for oil leaks. • ALWAYS relieve pressure before disconnecting hoses. • ALWAYS disconnect hoses before performing any maintenance on Power Rake. • Attachment must be securely latched to loader. • Before leaving operator's station, lower lift arms to stops, disengage hydraulics, stop engine, engage parking brake and make sure all rotation has stopped. • Check for loose or broken parts before operating, repair as needed. • Avoid stalling Power Rake. Continued stalling will overheat hydraulic system. • ALWAYS follow loader safety and operating instructions. • Stay back 50 feet during operation. • See additional safety and operational instructions in Owner's Manual. • Read and understand all operating and safety instructions in Owner's Manual before operating. • Failure to follow these instructions could result in injury or death. 	
	<p>WARNING: This product can expose you to chemicals including Cadmium, which is known to the State of California to cause cancer and birth defects or other reproductive harm. For more information go to www.P65Warnings.ca.gov.</p>
10358PP	

10358PP – POWER RAKE WARNING LABEL

Mini Skid Steer Power Rake Labels (cont.)



5264PP – CRUSH HAZARD WARNING LABEL

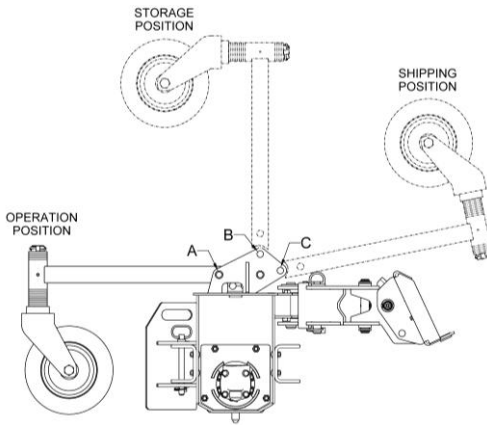


5263PP – PINCH POINT WARNING LABEL

Initial Use

- Read and understand all warning information in this manual before operating this attachment.
- Check that quick-tach on frame fits onto loader properly. Pins must engage through bottom of quick-tach.
- Slowly roll back attachment. Make sure there is no interference between attachment and loader.
- Make sure hoses do not pinch during roll back.
- Never exceed the maximum attachment operating pressure of 3800 psi.
- With the Mini Skid Steer Power Rake off of the ground, engage the auxiliary hydraulics using the “detent” position on the machine. Check the rotation of the drum (drum should be rotating clockwise as viewed from the motor side.) If this rotation does not match the “detent” position of your machine, switch the couplers on the lead hoses.
- If Mini Skid Steer Power Rake is equipped with manual angle, swing the power rake head through its cycle to check that the lead hoses do not bind or catch anywhere. Make sure the Mini Skid Steer Power Rake is not operating and the machine is shut off when changing the angle manually.
- If the Mini Skid Steer Power Rake is equipped with hydraulic angle with electric control, with the Mini Skid Steer Power Rake drum spinning (drum rotating clockwise viewed from motor side), engage the electrical controls and cycle the Mini Skid Steer Power Rake head from side to side and check that the lead hoses do not bind or catch anywhere. The Mini Skid Steer Power Rake will not angle when the drum is rotating in the reverse direction.
- If the Mini Skid Steer Power Rake is equipped with hydraulic angle for loaders with two auxiliary hydraulic circuits, the angle function can be used at any time. Make sure to connect the hoses for the drum motor and the hoses for the angle cylinder to the proper couplers on the loader.
- The Mini Skid Steer Power Rake is transported with the caster wheels in the “Shipping Position”. Remove the clevis pin (Location “C”) and flip the caster wheels to the “Operation Position” and secure with the clevis pin (Location “A”). The caster wheels can be put in the “Storage Position” when not being used or when storing the unit to take up less room.

Initial Use (cont.)

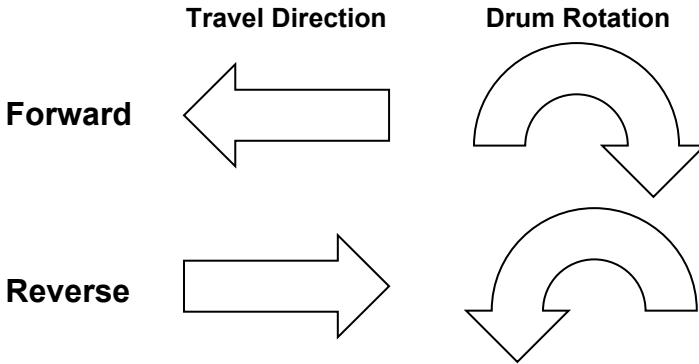


Operation

- Before raking an area, thoroughly check for obstructions such as pipes, fence posts, wire/cable, rocks, etc. Remove obstructions, if possible, flag any obstructions too large to move.
- Always relieve pressure before connecting or disconnecting hydraulic hoses.
- Engage hydraulics with the engine idling and Mini Skid Steer Power Rake above the ground. Bring the engine speed to the desired rpm and lower the machine boom to engage the Mini Skid Steer Power Rake into the ground.
- Before disengaging hydraulics, remove the Mini Skid Steer Power Rake from the ground and idle down the engine to minimize potential hydraulic motor damage.
- The Mini Skid Steer Power Rake is equipped with pin on wings that can be used if desired. The wings aid in moving material and filling low areas.
- The Mini Skid Steer Power Rake is designed to be operated so that the drum operates in both directions depending on the desired landscaping result. Allow the drum to stop completely before changing rotation direction to prevent damage to the hydraulic motor.
- The height of the Mini Skid Steer Power Rake caster wheels can be adjusted for various machines and working depths. To adjust, remove the lynch pin at the top of the caster wheel. Remove the spacers and caster wheel. Place the desired number of spacers on the caster wheel, reinstall the caster wheel to the arm and place remaining spacers on top and reinstall lynch pin. Make sure both caster wheels are adjusted the same.

Raking Recommendations

- When raking, it is recommended that the drum rotate in the opposite direction of travel.



- If the Mini Skid Steer Power Rake drum stalls, the travel speed is too fast or the drum depth is too deep. Slow down travel speed or decrease drum depth by raising the boom.
- Raking under wet conditions is not recommended as the soil will stick to the drum and teeth and result in decreased performance.
- When working in sod or compacted soils, multiple passes may be required to achieve desired results.
- Mowing and removing tall grass and weeds before raking an area will improve performance by minimizing grass and weeds wrapping around the drum.

Drum Speed

FLOW RATE (gpm)	SPEED (rpm)
10	194
12	233
14	272
16	311
18	349

Speeds are the same for all widths.

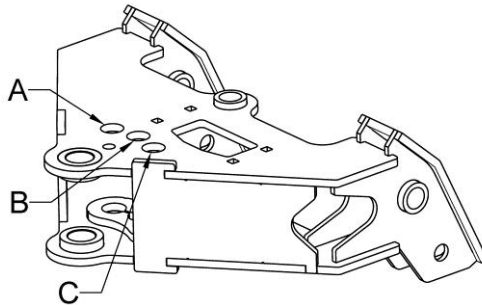
Maintenance

Procedure	Before Every Use	Every 10 Hours
Grease hinge pins, linkage pins, casters and bearing (8 fittings on Manual Angle, 10 fittings on units with Hydraulic Angle).	✓	✓
Make sure all safety labels are in place, look in the "Compact Power Rake Labels" section in this manual for locations	✓	✓
Check for loose, worn, or missing parts; repair or replace as needed.	✓	✓
Remove any foreign debris such as string, wire, etc. that may have wrapped around the drum.	✓	✓
Inspect motor, manifold, hydraulic fittings, and hoses for leaks and damage. Replace as needed. Make sure machine is shut off and hydraulic pressure is relieved before checking for leaks. <u>Never</u> use hands to check for high pressure hydraulic leaks.	✓	✓
Check the set screw on the 4 bolt bearing.	✓	✓

- The pressure relief valves require no maintenance. The valves are pre-set and require no adjustment. Changing settings may cause damage to the motor. Please call Bad Boy with any questions or problems regarding the pressure relief valves.
- Contact your dealer for any required replacement parts.

Manual Angle Operation

- Manual angle operation is achieved with a pin located near the head pivot pin. Angles that are available are straight, 25° right or 25° left.
- To change the angle of the Mini Skid Steer Power Rake head, lift the Mini Skid Steer Power Rake off of the ground, remove the pin, swing the head in the desired direction and reinstall pin. Make sure drum is not rotating and machine is shut off when changing the angle manually.



Pin location for various angles:

- Angle Left → Pin location A.
- Straight → Pin location B.
- Angle Right → Pin location C.

Optional Hydraulic Angle with Electric Control Operation

- If the machine has an electrical package (8 pin or 14 pin connector), connect the attachment electrical plug to the plug on the boom arm of the loader when hooking up the attachment to the loader. The angle of the Mini Skid Steer Power Rake should now be controlled by an electrical switch located in the operator station of the machine.
- If the machine does not have an electrical package, there are 2 options to make the Hydraulic Angle with Electric Control work. If the machine has a 12-volt accessory plug (cigarette lighter), you can use the optional control box for power. If the machine does not have a 12-volt accessory plug, a 12-volt accessory outlet is available from Bad Boy to connect to the battery of the machine and then utilize the optional control box.
- In either of the above scenarios, the Mini Skid Steer Power Rake needs to be running, drum rotating clockwise viewed from the motor side, before the electro-hydraulic angle will function. The hydraulic angle will not work if the drum is running in the reverse direction.

Optional Hydraulic Angle Operation, Loaders with Two Auxiliary Circuits

- If the loader has two independent circuits, the drum/motor and hydraulic angle/cylinder can be started or stopped independently at any time.
- If the loader has a diverter valve at the boom creating the 2 hydraulic circuits, the drum/motor needs to come to a stop before actuating the hydraulic angle/cylinder. Hydraulic angle/cylinder motion needs to stop before engaging the drum/motor.

Bolt Torque Chart

SIZE	GRADE 5		GRADE 8		SHCS*	
	COARSE	FINE	COARSE	FINE	COARSE	FINE
1/4"	6	7	9	10	10	12
5/16"	13	15	18	20	22	24
3/8"	23	26	33	37	38	43
7/16"	37	41	52	58	61	68
1/2"	57	64	80	90	93	105
9/16"	82	91	115	128	134	150
5/8"	113	128	159	180	179	202
3/4"	200	223	282	315	317	354

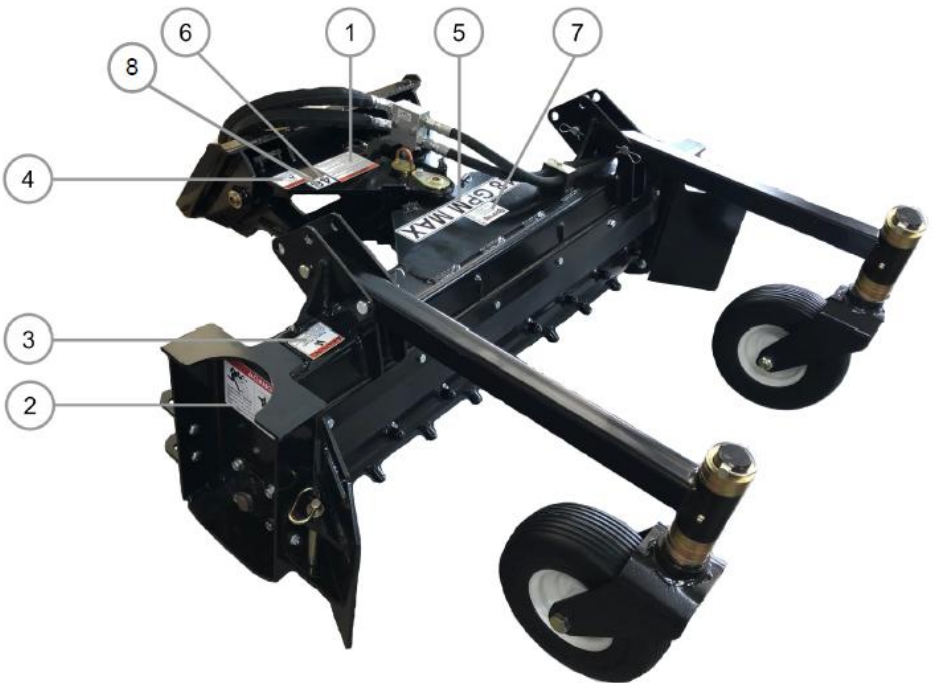
*SHCS—Socket Head Cap Screw

Values are lubricated conditions in ft.-lb. and are recommended unless otherwise noted.

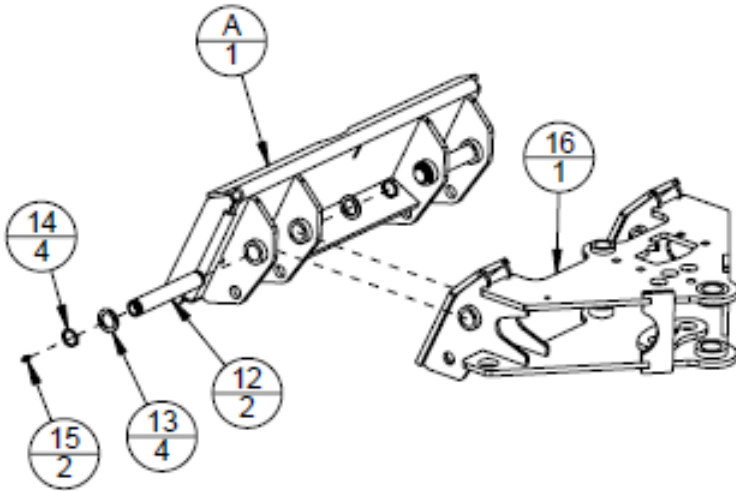
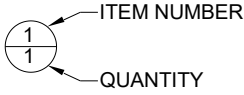
Mini Skid Steer Power Rake Labels Parts List

ITEM	PART NO.	QTY	DESCRIPTION
1	10358PP	1	POWER RAKE WARNING LABEL
2	10359PP	2	POWER RAKE DANGER LABEL
3	5263PP	2	PINCH POINT WARNING LABEL
4	5264PP	2	CRUSH HAZARD WARNING LABEL
5	7489PP	1	18 GPM MAX LABEL
A	6	1	48 WIDTH LABEL
	7	1	BAD BOY SERIAL TAG
A	8	1	60 WIDTH LABEL

A – Only one needed depending on the configuration.



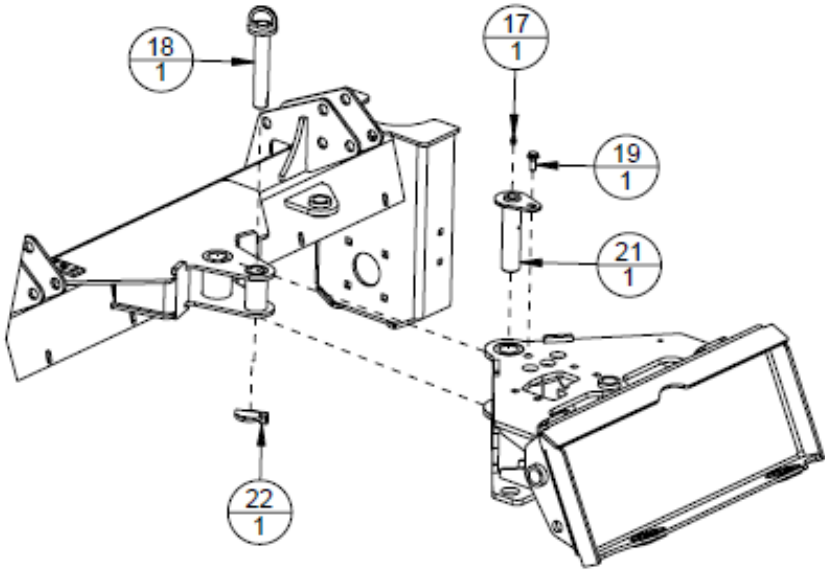
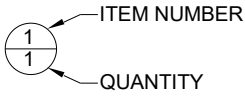
Quick Tach Assembly



	ITEM	PART NO.	QTY	DESCRIPTION
A	9	13467VW	1	CPR STANDARD MINI WDT
A	10	13539VW	1	CPR BOBCAT MINI WDT
A	11	13544VW	1	CPR ASV MINI WDT
	12	5093VP	2	HINGE PIN
	13	5146PP	4	1" X 10 GA MACHINERY BUSHING
	14	5147PP	4	1" EXTERNAL SNAP RING
	15	1034PP	2	1/4" -28 STRAIGHT GREASE ZERK
	16	13466VW	1	CPR PIVOT LINK WDT

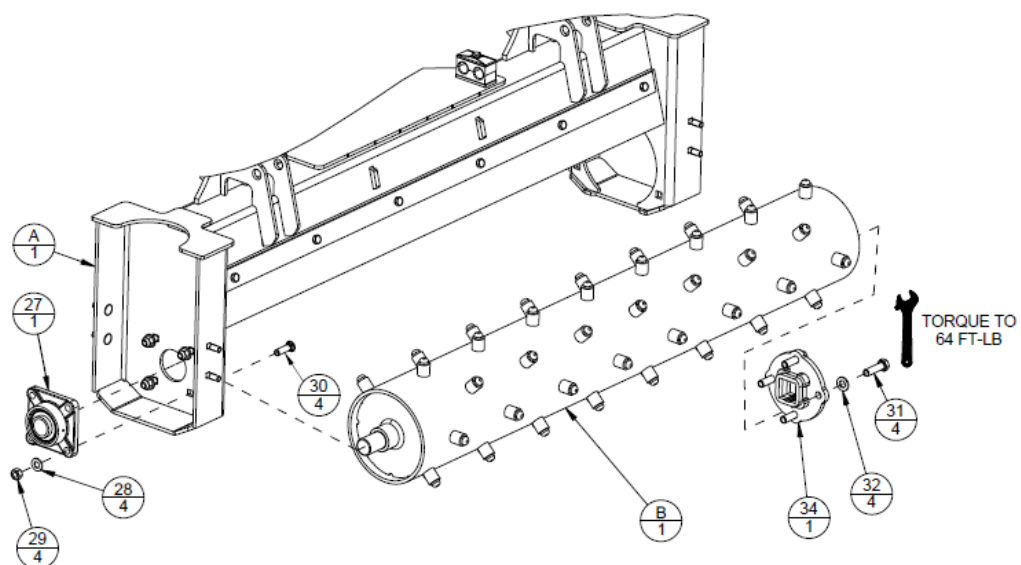
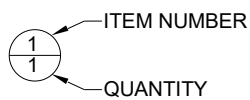
A – Only one is needed depending on the configuration.

A-Frame Assembly



ITEM	PART NO.	QTY	DESCRIPTION
17	1034PP	1	1/4" -28 STRAIGHT GREASE ZERK
18	13468VW	1	CPR PIVOT PIN WDT
19	13378PP	1	3/8"-16 X 1" LG HHSFS GR8
21	7811VW	1	DMP CYLINDER END PIN WELDMENT
22	6863PP	1	7/16" X 1-3/4" LG LYNCH PIN

Drum Installation



Drum Installation Parts List

CPR48				
	ITEM	PART NO.	QTY	DESCRIPTION
A	23	13457VW	1	CPR FRAME WDT
B	24	18044VW	1	CPR48 DRUM WDT

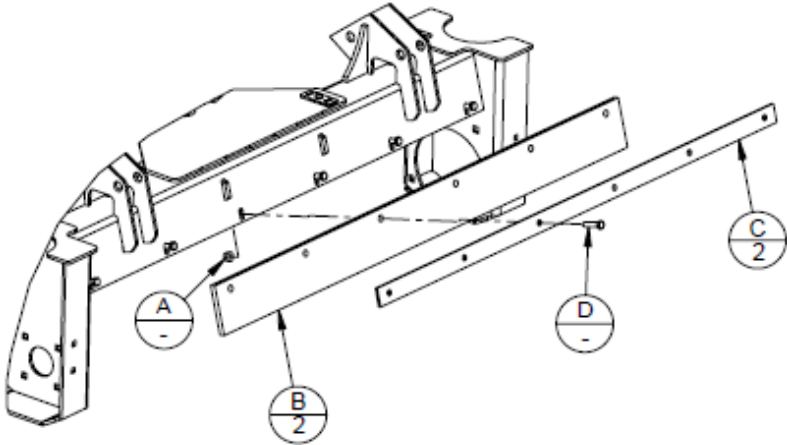
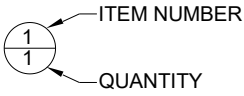
* This table is model specific.

CPR60				
	ITEM	PART NO.	QTY	DESCRIPTION
A	25	13553VW	1	CPR FRAME WDT
B	26	18045VW	1	CPR60 DRUM WDT

* This table is model specific.

ITEM	PART NO.	QTY	DESCRIPTION
27	12396PP	1	1-1/4" BEARING W/4 HOLE FLANGE
28	8679PP	4	7/16" SAE FLAT WASHER
29	1005PP	4	7/16" -14 REVERSE LOCK NUT
30	17777PP	4	7/16" -14 X 1-1/2" LG CB
31	8866PP	4	1/2" -13 X 1-3/4" LG HHCS GR8
32	12040PP	4	1/2" DELTA PROTEKT WASHER
34	13461VW	1	CPR DRIVE ADAPTER WDT

Deflector Installation



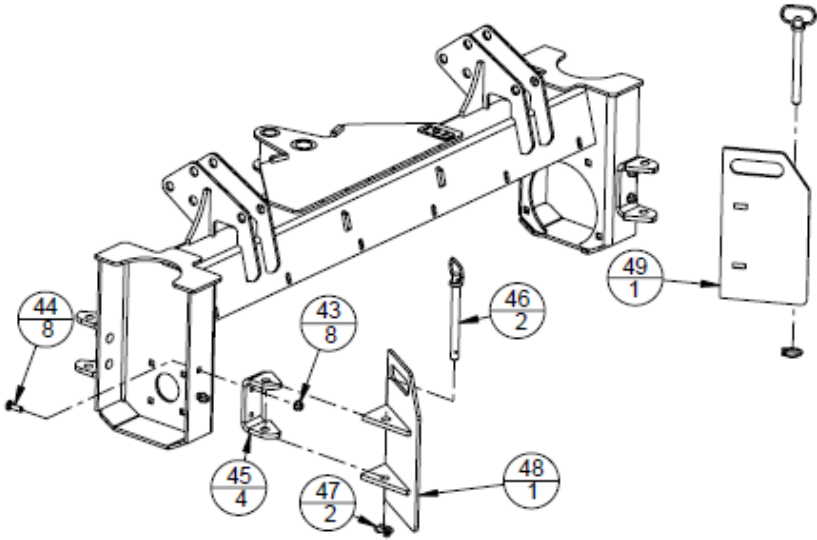
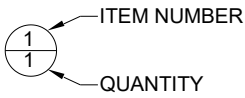
CPR48				
	ITEM	PART NO.	QTY	DESCRIPTION
A	35	6140PP	12	3/8" -16 TOP LOCK FLANGE NUT
B	36	13487VP	2	DEFLECTOR RUBBER
C	37	13488VP	2	DEFLECTOR HOLDING STRIP
D	38	7335PP	12	3/8" -16 X 1-1/2" LG HHCS

* This table is model specific.

CPR60				
	ITEM	PART NO.	QTY	DESCRIPTION
A	39	6140PP	14	3/8" -16 TOP LOCK FLANGE NUT
B	40	13558VP	2	DEFLECTOR RUBBER
C	41	13559VP	2	DEFLECTOR HOLDING STRIP
D	42	7335PP	14	3/8" -16 X 1-1/2" LG HHCS

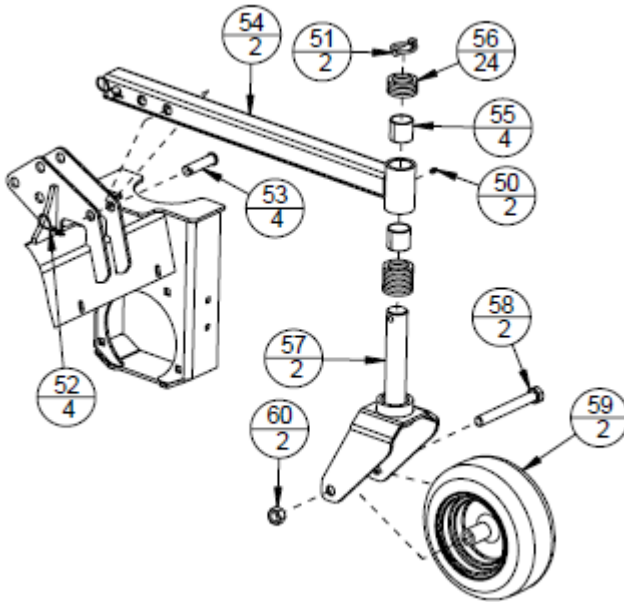
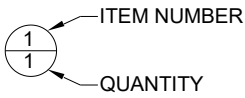
* This table is model specific.

Wing Installation



ITEM	PART NO.	QTY	DESCRIPTION
43	6140PP	8	3/8" -16 TOP LOCK FLANGE NUT
44	15620PP	8	3/8"-16 X 1 1/4" LG CB
45	13491VP	4	CPR SIDE DEFLECTOR MOUNT
46	10974PP	2	5/8" X 6-1/2" LG HITCH PIN
47	6723PP	2	3/16" X 1" LG LYNCH PIN
48	13464VW	1	CPR WING RH WDT
49	13465VW	1	CPR WING LH WDT

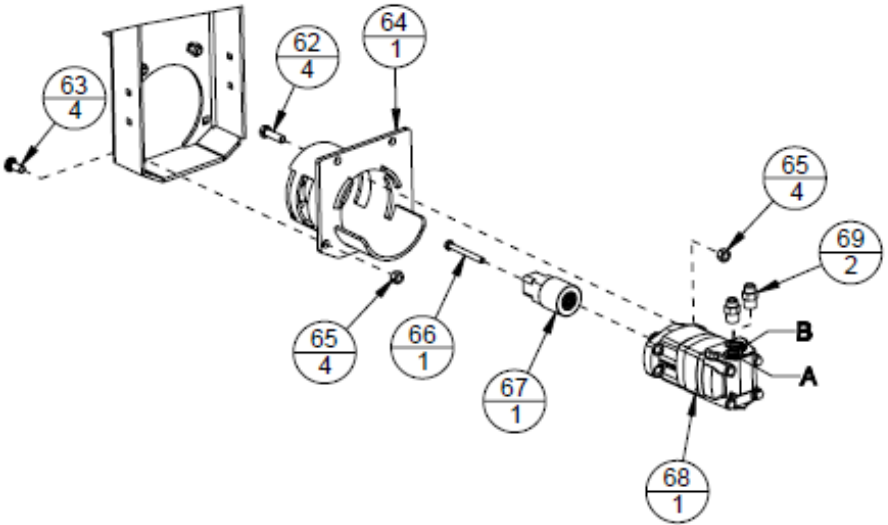
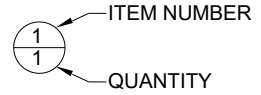
Caster Arm Installation



ITEM	PART NO.	QTY	DESCRIPTION
50	1034PP	2	1/4" -28 STRAIGHT GREASE ZERK
51	6863PP	2	7/16" X 1-3/4" LG LYNCH PIN
52	7398PP	4	HITCH PIN CLIP
53	11376PP	4	3/4" X 3" CLEVIS PIN
54	13462VW	2	CPR CASTER ARM WDT
55	5586PP	4	1-9/16" DIA X 1-9/16" LG BUSH
56	9070VP	24	CASTER SPACER WASHER
57	13463VW	2	CPR CASTER WDT
58	13505PP	2	3/4" -10 X 5" LG HHCS
59	13057PP	2	CUL CASTER TIRE
60	1011PP	2	3/4" -10 TOP LOCK NUT

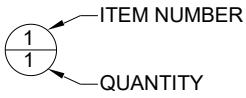
* This view only shows the left-hand side installation.

Motor Installation



ITEM	PART NO.	QTY	DESCRIPTION
62	8866PP	4	1/2" -13 X 1-3/4" LG HHCS GR8
63	7964PP	4	1/2" -13 X 1-1/4" LG CB
64	13458VW	1	CPR MOTOR CAN WDT
65	1003PP	8	1/2" -13 REVERSE LOCK NUT
66	6970PP	1	3/8" -16 X 3-1/2" LG HHCS
67	16339VP	1	DRIVE ADAPTER
68	13222PP	1	MOTOR 11.9 CID
69	13567PP	2	ADAPTER 8MJ TO 10MB

Hydraulic Installation



Standard Coupler Assembly

- Connect female coupler to Inner motor port.
- Connect male coupler to Outer motor port



Hydraulic Installation Parts List

CPR48			
ITEM	PART NO.	QTY	DESCRIPTION
A 71	13727PP	2	HYD HOSE 1/2" 8FJX TO 8FJX W/O WRAP

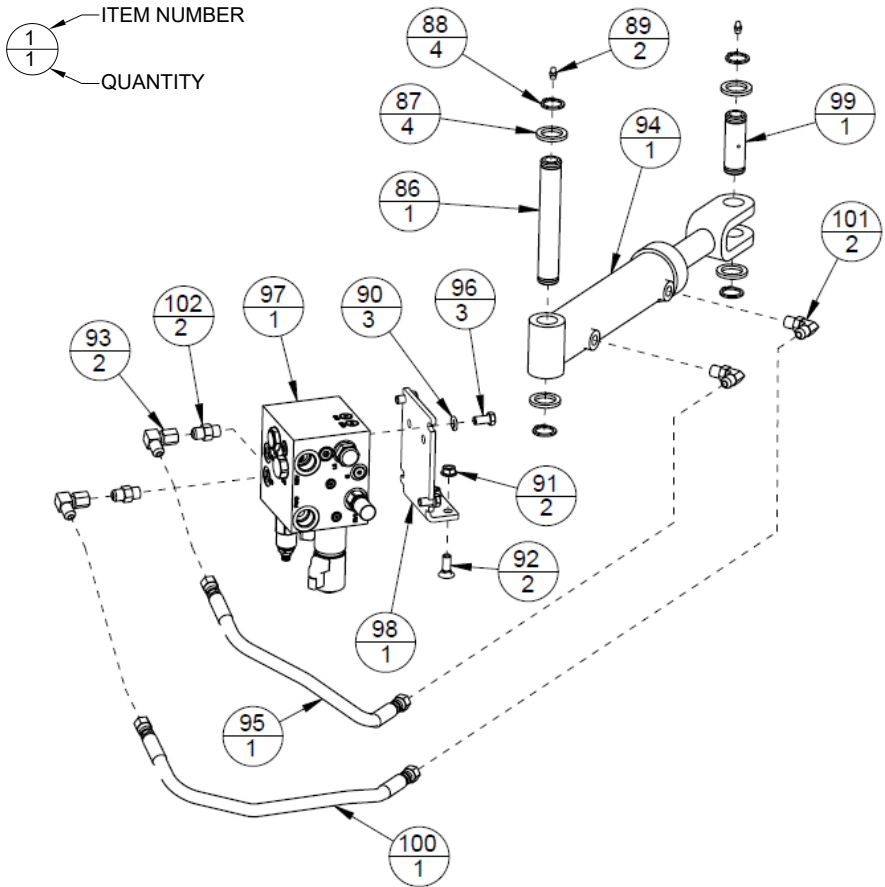
* This table is model specific.

CPR60			
ITEM	PART NO.	QTY	DESCRIPTION
A 72	13566PP	2	HYD HOSE 1/2" 8FJX TO 8FJX W/O WRAP

* This table is model specific.

ITEM	PART NO.	QTY	DESCRIPTION
73	6140PP	4	3/8" -16 TOP LOCK FLANGE NUT
74	15620PP	2	3/8"-16 X 1 1/4" LG CB
75	13567PP	2	ADAPTER 8MJ TO 10MB
76	8735PP	1	COUPLER MALE 12FB CUP
77	8734PP	1	COUPLER FEMALE 12FB CUP
78	13565PP	2	HYD HOSE 1/2" X 12MB TO 8FJX
79	10418PP	2	ELBOW 90 8MJ TO 10MB
80	13008PP	1	CUL CROSS OVER RELIEF
81	1084PP	1	5/16" -18 X 1-3/4" LG HHCS
82	13786PP	1	CLAMP TOP PLATE 1/2" NO SLEEVE
83	13785PP	1	INSERT 1/2" NO SLEEVE (2 EA)
84	17559VP	1	MINI MANIFOLD BRACKET
85	6721PP	2	3/8" -16 X 2 1/4" LG HHCS

Optional Hydraulic Angle Installation



Standard Hydraulic Angle Connections

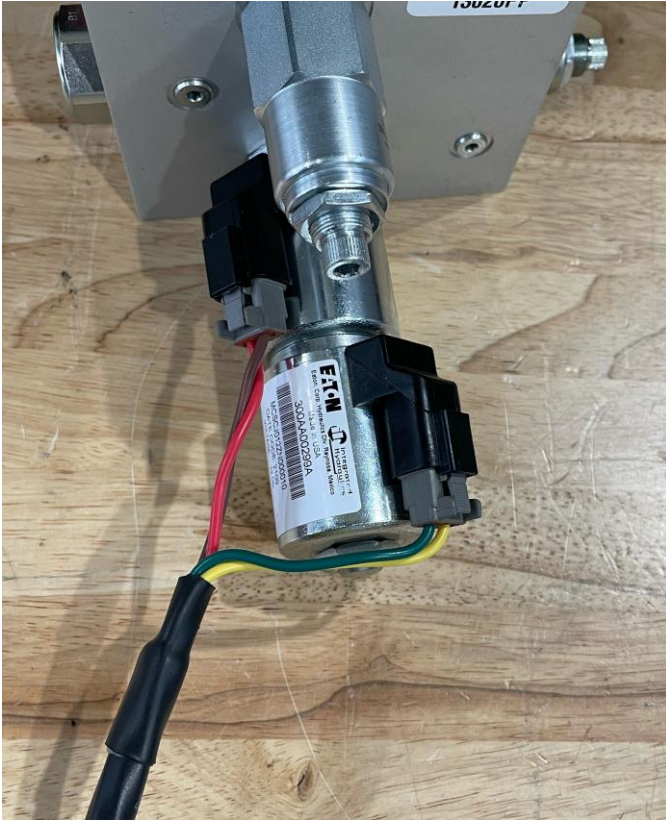
- Manifold port M1 → Inner motor port.
- Manifold port M2 → Outer motor port.
- Manifold port FWD → Female coupler.
- Manifold port REV → Male coupler.
- Manifold port C1 → Barrel end of cylinder.
- Manifold port C2 → Rod end of cylinder.

Optional Hydraulic Angle with Electric Control Parts List

ITEM	PART NO.	QTY	DESCRIPTION
86	5093VP	1	HINGE PIN
87	5146PP	4	1" X 10GA MACHINERY BUSHING
88	5147PP	4	1" EXTERNAL SNAP RING
89	1034PP	2	1/4" -28 STRAIGHT GREASE ZERK
90	1075PP	3	3/8" LOCK WASHER
91	6140PP	2	3/8" -16 TOP LOCK FLANGE NUT
92	1089PP	2	3/8" -16 X 1" LG CARRIAGE BOLT
93	1012PP	2	ELBOW 90 6FJX TO 6 MJ
94	10884PP	1	2" BORE 6" STROKE CYLINDER
95	1103PP	1	HYD HOSE 1/4" X 15-1/8" LG 6FJX TO 6FJX
96	1116PP	3	3/8" -16 X 3/4" LG HHCS
97	13020PP	1	CUL MOTOR CYLINDER MANIFOLD
98	13499VP	1	CPR MANIFOLD MOUNT
99	5094VP	1	CYLINDER PIN
100	6610PP	1	HYD HOSE 1/4" X 20" LG 6FJX TO 6FJX
101	6997PP	2	ELBOW 90 6MJ TO 6MB
102	7796PP	2	ADAPTER 6MJ-6MB
A 103	14154VA	1	CUL 2 FUNCTION WIRE HARNESS

A – Item 103 is not pictured.

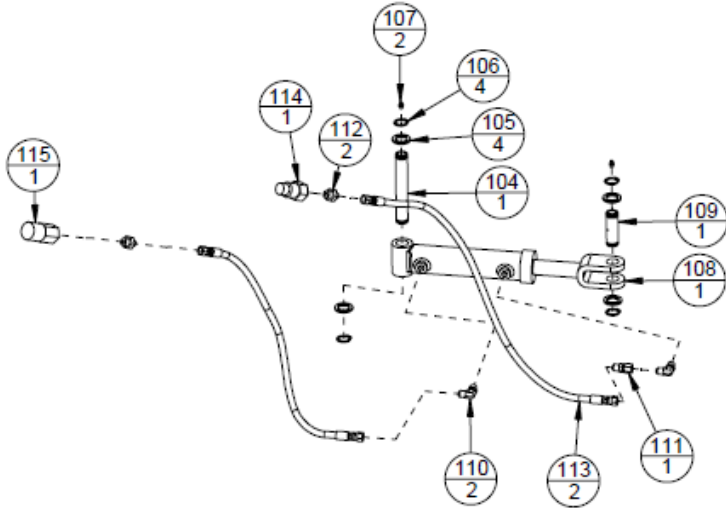
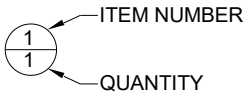
Electrical Harness Connections



Standard Electrical Harness Connections

- Green/Yellow or Green/White, Furthest from Manifold Block.
- Red/Brown or Red/Black, Nearest to Manifold Block.

Optional Hydraulic Angle Assembly Utilizing Second Auxiliary Circuit (In Addition to Standard Hydraulic Assembly)



ITEM	PART NO.	QTY	DESCRIPTION
104	5093VP	1	HINGE PIN
105	5146PP	4	1" X 10GA MACHINERY BUSHING
106	5147PP	4	1" EXTERNAL SNAP RING
107	1034PP	2	1/4" -28 STRAIGHT GREASE ZERK
108	10884PP	1	2" BORE 6" STROKE CYLINDER
109	5094VP	1	CYLINDER PIN
110	6997PP	2	ELBOW 90 6MJ TO 6MB
111	1132PP	1	1/32" DIARESTRICTOR FITTING IN LINE 6 JIC
112	1145PP	2	ADAPTER 6MJ TO 8MB
113	12174PP	2	HYD HOSE 1/4" X 46" LG 6FJX TO 6FJX
114	8495PP	1	COUPLER MALE 8FB
115	8494PP	1	COUPLER FEMALE 8FB

