



# **RECON ATTACHMENTS**

## **MINI SKID STEER AUGER**

### **OWNER'S OPERATOR SERVICE MANUAL**

For additional information, please see us at  
[www.badboycountry.com](http://www.badboycountry.com)



## **Owners/Operators Manual**

Model Number \_\_\_\_\_

Serial Number \_\_\_\_\_

Serial Numbers 246101 and Greater  
Date Created 05/07/26  
Revised Date 05/07/26

# Warranty Statement

## 1. WHAT THIS WARRANTY COVERS, AND FOR HOW LONG:

Bad Boy Mowers, LLC will, at its option, repair or replace without charge, any part covered by the warranty which is found to be defective in material and/or workmanship for one (1) year after the date of sale to the original retail purchaser **unless the product is used for rental purposes, in which case there is no warranty.**

At Bad Boy Mowers, LLC's request, customer will make the defective part available for inspection by Bad Boy Mowers, LLC and/or return the defective part to Bad Boy Mowers, LLC, with **transportation charges prepaid.**

## 2. WHAT THIS WARRANTY DOES NOT COVER:

- A. This warranty does not cover defects caused by depreciation or damage caused by normal wear, accidents, improper maintenance, improper use or abuse of the product, alterations, or failure to follow the instructions contained in the Owner's Manual for operation and maintenance.
- B. The customer shall pay any charges for making service calls and/or for transporting the implement to and from the place where the inspection and/or warranty work is performed. Bad Boy Mowers, LLC will not be responsible for the pickup and delivery of the implement for warranty purposes.
- C. Normal maintenance services or normal deterioration of exterior finish due to use or exposure.
- D. Replacement of services and items are subject to normal service replacement.

## 3. HOW TO OBTAIN SERVICE UNDER THIS WARRANTY:

- A. Warranty service can be arranged by contacting the dealer where you purchased the implement or by sending an email to [warranty@badboycountry.com](mailto:warranty@badboycountry.com). Proof of the date of purchase may be required to verify warranty coverage. Warranty repairs must be completed by an authorized Bad Boy center.
- B. Warranty claims will not be reviewed or paid unless the warranty registration is received by Bad Boy Mowers, LLC within 30 days of the retail purchase date.
- C. Warranty claims requiring parts returned will be settled upon return of parts to Bad Boy for inspection.
- D. All warranty issues must be handled through an authorized service center or dealership.

4. **WARRANTY LIMITATION:**

A. **THERE IS NO OTHER EXPRESS WARRANTY. ANY WARRANTY THAT MAY BE IMPLIED FROM THIS PURCHASE, INCLUDING MERCHANTABILITY AND FITNESS FOR A PARTICULAR PURPOSE IS HEREBY LIMITED TO THE DURATION OF THIS WARRANTY AND TO THE EXTENT PERMITTED BY LAW. ANY AND ALL IMPLIED WARRANTIES ARE EXCLUDED.** Some states do not allow limitations on how long an implied warranty lasts, so the above limitations may not apply to you.

B. **BAD BOY MOWERS, LLC WILL NOT BE LIABLE FOR ANY INCIDENTAL, CONSEQUENTIAL, OR SPECIAL DAMAGES AND/OR EXPENSES IN CONNECTION WITH THE PURCHASE OR USE OF THE IMPLEMENT.** Some states do not allow the exclusion or limitation of incidental or consequential damages, so the above limitation(s) or exclusion(s) may not apply to you.

C. Only the warranty expressed in this limited warranty shall apply and no dealer, distributor, or individual is authorized to amend, modify, or extend this warranty in any way. Accordingly, additional statements such as dealer advertising or presentations, whether oral or written, do not constitute warranties by Bad Boy Mowers, LLC and should not be relied on.

D. This warranty extends only to implement operated under normal conditions and properly serviced and maintained. The warranty expressly does not cover (i) any defects, damage, or deterioration due to normal use, wear and tear, or exposure; (ii) normal maintenance services; (iii) damage or defects arising out of or relating to misuse, neglect, alteration, negligence, or accident; (v) repair or replacement arising from operation of or use of the implement which is not in accordance with operating instructions as specified in the Operator's Manual or other operational instructions provided by Bad Boy Mowers, LLC; (vi) repair or replacement arising as a result of any operation from implement that has been altered or modified so as to, indetermination of Bad Boy Mowers, LLC, adversely affect the operation, performance, or durability of the implement or that has altered, modified, or affected the implement so as to change the intended use of the product; (vii) repair or replacement necessitated by use of parts, accessories, or supplies, including gasoline, oil, or lubricants that are incompatible with the implement or other than as recommended in the Operator's Manual or other operational instructions provided by Bad Boy Mowers, LLC; (viii) repairs or

replacements resulting from parts or accessories which have adversely affected the operation, performance, or durability of the implement; or (ix) damage or defects due to or arising out of repair of implement by person or persons other than an authorized Bad Boy Mowers, LLC service dealer or the installation of parts other than genuine Bad Boy Mowers, LLC recommended parts. **As a condition of this warranty, customer shall have read the Operator's Manual and ensured the implement has been registered within 30 days of purchase.**

- E. This warranty gives you specific legal rights, and you may also have other rights, which vary from state to state.

**BAD BOY MOWERS, LLC  
102 INDUSTRIAL DRIVE  
BATESVILLE, AR 72501**

**WWW.BADBOYCOUNTRY.COM**

Technical Support:.....techsupport@badboycountry.com  
Warranty:.....warranty@badboycountry.com  
Parts:.....partsdept@badboycountry.com

## **Warranty Registration**

**Ensure selling dealership has registered the implement within 30 days of purchase to validate warranty. Please record the serial number, date of purchase, and dealership information for your records.**

Serial # \_\_\_\_\_

Date of Purchase \_\_\_\_\_

Dealer Information \_\_\_\_\_

# Features of Bad Boy Auger Drive include:

- Drive unit interchangeable between skid steer, mini excavator & mini skid steer interface mounts.
- Hoses routed from top of housing for deeper drilling with 12" diameter bits.
- Direct drive motor with hydraulic pressure relief protection.
- Bi-directional auger rotation.
- Planetary reduction with 2" hex output or 2 9/16" round output.
- Carrier interface mount options:
  - Skid Loader (AUGQL).
  - Compact Utility Loader: Standard Mini (AUGQS), Bobcat (AUGQB) and ASV (AUGQA).
  - Mini Excavator (AUGQX) used with various Bolt on Hanger Brackets.
- Recommended flow rates:
  - AUG30H/R – 10-18 gpm
  - AUG36H/R – 15-25 gpm
  - AUGHT36 – 15-27 gpm
- Recommended maximum auger bit size:
  - Skid Loader: 36 in.
  - Compact Utility Loader: 30 in.
  - Mini Excavator: 36 in.
- Motor standard with hydraulic manifold with pressure relief valves.
- Maximum high-pressure relief set at 3500 PSI, all models.
- Weight of auger mount, auger drive, auger bit and material should not exceed carrier operating capacity.

## Auger Drive Specs

| MODEL                       | AUG30H    | AUG30R | AUG36H    | AUG36R | AUGHT36   |
|-----------------------------|-----------|--------|-----------|--------|-----------|
| Recommended Flow Rate (GPM) | 10-18 GPM |        | 15-25 GPM |        | 15-27 GPM |
| Weight (Pounds)             | 150       | 150    | 150       | 150    | 175       |

## Auger Mount Specs

| MODEL           | AUGQA | AUGQB | AUGQL | AUGQS | <sup>1</sup> AUGQX |
|-----------------|-------|-------|-------|-------|--------------------|
| Weight (Pounds) | 100   | 90    | 125   | 70    | 50                 |

<sup>1</sup>Mini Excavator Bolt-On Hanger Brackets sold separately.

# Safety

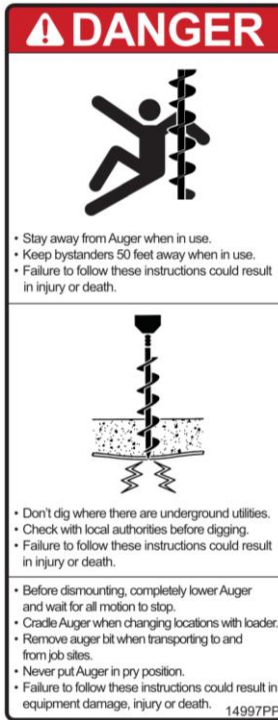
- Always follow safety information in this manual.
- Always follow all safety and operating instructions of carrier.
- Make sure all safety labels are in place. Refer to this manual for locations.
- Keep bystanders back 50 feet.
- Never dig near underground utilities. If unsure of utilities, call local authorities to have all utilities located. Make sure to check how close you can dig to flags/markings they have positioned.
- Before digging, clear the area of all objects and debris that could get caught or tangled in the auger.
- Do not attempt to manually guide or aim the auger using hands or tools. Never touch any part of the Auger Drive system while in use.

## Auger Drive Labels



5265PP-HYDRAULIC WARNING LABEL

## Auger Drive Labels (cont.)



14997PP-AUGER DANGER



15691PP-AUGER DECAL AUG30



15692PP-AUGER DECAL AUG36



15738PP-AUGER DECAL AUGHT36

# Initial Use

- Read and understand all warning information in this manual before operating this attachment.
- **For skid loaders and compact utility loaders:**
  - Check that quick-tach on frame fits onto loader properly. Pins must engage through plates at bottom of quick-tach.
  - Slowly roll back attachment. Make sure there is no interference between attachment and loader.
  - If the lead hoses are not routed to the side of the frame that matches the loaders hydraulic coupler location, see the “Alternate Hose Routing” section for instructions on how to modify the hose routing.
  - Make sure hoses do not pinch during roll back.
  - Raise attachment and slowly roll forward to digging position (Auger Drive should rotate completely out of the cradle). Check that hoses are long enough so they do not stretch or bind. Hoses are clamped to side of frame. Auger Drive is shipped with minimum amount of hose required between clamp and auger head. If there is excess hose between clamp and loader, loosen clamp and position more hose between clamp and auger head. Verify that hoses will not get caught or crushed by auger head while in use.
- **For mini-excavators:**
  - Check that excavator mount fits onto excavator properly. See excavator manual for reference.
  - Excavator must be rated with lift capacity to safely maneuver the auger at full reach. Consult excavator manual or dealer for reference.
  - Auger requires auxiliary hydraulic function plumbed near end of dipstick.
  - Slowly go through full range of motion. Ensure there is no interference between attachment and excavator and that hoses do not pull.
- Start auger at an idle, check for oil leaks per instructions in “Maintenance” section.
- Do not connect this attachment to high flow couplers.

# Operation

- Use extreme care when digging holes close to fences, ditches, large obstacles, and digging holes on hillsides.
- Keep carrier arm and Auger Drive attachment as low as possible when changing locations with the carrier. Do not travel or turn with carrier arm up and Auger Drive attachment raised.
- Always cradle Auger Drive when changing carrier locations. Lower the auger bit to about 10 - 15 inches above the ground while moving carrier. Avoid excessive speed and sudden maneuvers.
- Do not operate on or drive across steep slopes.
- Before dismounting, completely lower Auger Drive attachment and wait for all motion to stop.
- Always relieve pressure before disconnecting hydraulic hoses.
- Clean any debris from attachment. Pay special attention to any debris in interface area.

# Hole Digging

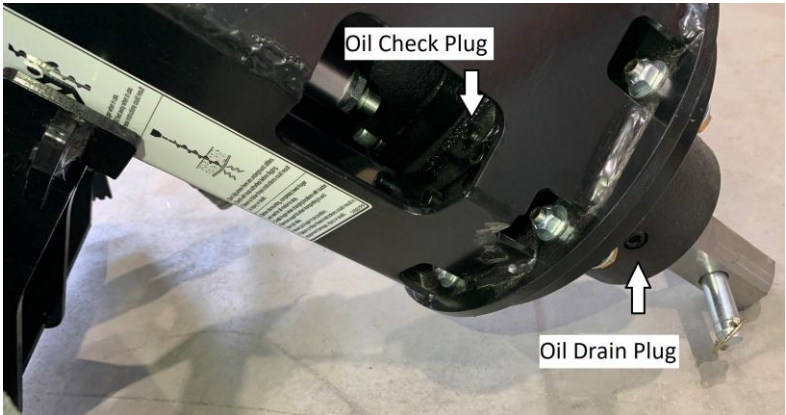
- Raise the carrier arm and roll auger interface until the Auger Drive is free from the cradle.
- Position the auger over the desired location of the hole to be dug.
- Lower the auger to the ground so the tip of the auger just penetrates the ground.
- Adjust throttle to high idle and activate auxiliary hydraulics. The auger should spin in a clockwise direction.
- Keep auger attachment under control by running carrier engine at slowest speed possible to accomplish digging application.
- Lower the carrier arm to apply down pressure. If the auger stalls or slows greatly, decrease down pressure.
- It may be necessary to move the carrier while digging a hole to maintain a vertical digging position. Care should be taken to not move the carrier too far. Doing so could damage the planetary reduction (gearbox) and/or auger.
- If the auger should become stuck, stop hydraulic flow, reverse flow and slowly lift auger out of the hole.
- Auger can be raised to clean hole of dirt, and then lowered to resume digging. Repeat as many times as necessary to reach desired depth.
- Once the desired depth is reached, allow the auger to run a few seconds to clean any loose dirt out of the hole.
- Shut off auxiliary hydraulics before raising auger out of the hole.
- Before moving carrier, make sure auger bit is fully out of the hole.

# Maintenance

| Procedure   | Every 10 Hours | After First 50 Hours | Every 12 Months or 1,000 Hours |
|---|----------------|----------------------|--------------------------------|
| Make sure all safety labels are in place. Refer to this manual for locations.   | ✓              |                      |                                |
| Grease hinge pins (2 grease fittings total).  | ✓              |                      |                                |
| Check for loose, worn, or missing parts. Repair or replace as needed. Replace worn or broken parts promptly to reduce wear of other auger bit components. | ✓              |                      |                                |
| Inspect motor, planetary reduction (gearbox), hydraulic fittings, and hoses for leaks and damage. Replace as needed.                                      | ✓              |                      |                                |
| Change the planetary reduction (gearbox) oil.   |                | ✓                    | ✓                              |

- Make sure carrier is shut off and hydraulic pressure is relieved before checking for leaks. Never use hands to check for high pressure hydraulic leaks.
- If there is oil leaking out of the planetary reduction (gearbox); the oil level must be checked:
  - **For AUG30H, AUG30R, AUG36H and AUG36R planetary:**
    - With the Auger Drive attached to the carrier, position the Auger Can/Planetary so that while secured in the cradle, the Auger Can/Planetary is at approximately 45° relative to the ground. Remove oil check plug noted in picture below using a ¼" hex drive. (There are oil check plugs located on both sides of the planetary, either can be used.)

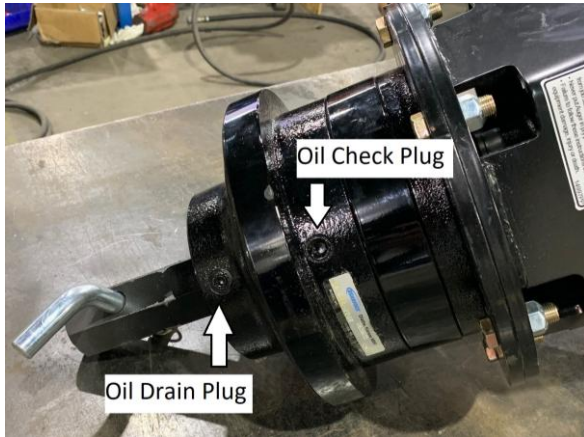
## Maintenance (cont.)



- With the oil check plug removed, oil should be visible in the threaded plug hole. If the oil level is difficult to see, use of a flashlight will improve visibility. Note: units are shipped with the proper amount of oil.
- Add oil (SAE 80W-90 gear lubricant, API-GL-5 approved) as required through the oil check plug hole. Do not overfill. Overfilling may cause oil to be forced out between the planetary reduction (gearbox) and the motor as the oil heats up from use. Planetary reductions (gearboxes) that are run dry will not be covered by warranty.

## Maintenance (cont.)

- **For AUGHT36H planetary:**
  - With the Auger Drive attached to the carrier,
    - For skid loaders and compact utility loaders, position so mount plate of Auger Drive is straight up/down.
    - For mini-excavators, position the bolt in hanger plate interface straight up/down.
    - Remove oil check plug noted in picture below.



- The oil level should be about 2" inward from the outer side of the plug hole, following the angle of the threaded plug hole. The oil level may be hard to visually see, use of a flashlight will improve visibility. A clean piece of wire can be used to check oil level. Stick the wire into the plug hole aligned with the plug hole. By marking the wire at the level of the outside of the plug hole and noting the oil mark on the wire, oil level can be determined. Note: units are shipped with the proper amount of oil.
- Add oil (SAE 80W-90 gear lubricant, API-GL-5 approved) through the oil check plug hole as required. Do not overfill. Overfilling may cause oil to be forced out between the planetary reduction (gearbox) and the motor as the oil heats up from use. Planetary reductions (gearboxes) that are run dry will not be covered by warranty.
- Cutting teeth can be sharpened with an angle grinder if they become too dull to dig properly.
- The pressure relief valves are factory pre-set and require no adjustment.

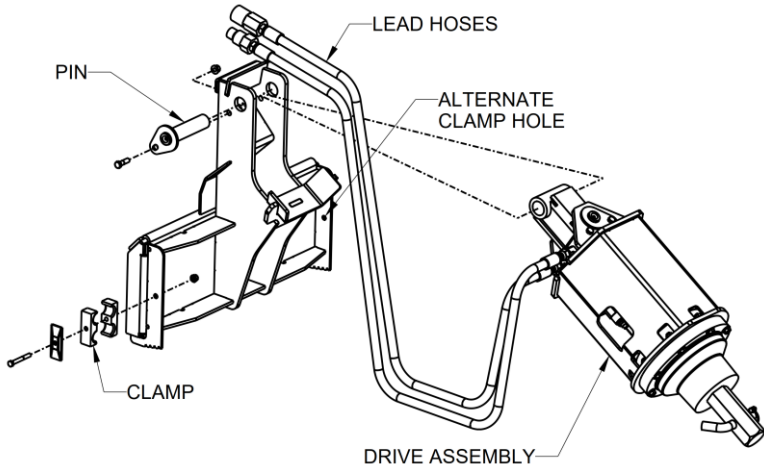
## Maintenance (cont.)

- If the auger system is still under warranty, contact your dealer before attempting any repairs. **Planetary reductions (gearboxes) and motors that have been disassembled without prior approval will not be covered under warranty.** Planetary reductions (gearboxes) and motors need to be intact for Bad Boy to get any warranty reimbursement from the component manufacturer. If the component manufacturer declines warranty due to tampering or miss-use, Bad Boy reserves the right to void warranty as well.
- Contact your dealer for any required replacement parts.
- Replacing the planetary reduction (gearbox) oil:
  - Position auger head so the output shaft is pointing down.
  - Remove oil drain plug at the bottom of the reduction, as noted in pictures on previous pages. Drain oil into a suitable container. Dispose of oil in a proper manner.
  - **For AUG30H, AUG30R, AUG36H and AUG36R Planetary:** Add 25 oz. of oil into the oil check plug located on the reduction, noted in picture on previous pages.
  - **For AUGHT36H Planetary:** Add 32 oz. of oil into the oil check plug located on the reduction, noted in picture on previous pages.
  - Oil to be SAE 80W-90 gear lubricant, API-GL-5 approved.

# Alternate Hose Routing

Every effort will be made to route the lead hoses of the Auger Drive to match the carrier hydraulic coupler location. However, due the carrier differences, the hose routing may need to be altered to allow proper operation. The following procedure will work for either right or left hose routing.

- Remove hardware and lead hose clamp (if supplied).
- Remove hardware and pin.
- Rotate drive assembly and lead hoses 180°. (If lead hoses were on the right side, they should now be on the left side.)
- Reinstall pin and secure with hardware.
- Reinstall clamp and secure with hardware (if supplied).



## Output Torque

| Pressure (psi) | Torque (ft-lb)    |                   |          |
|----------------|-------------------|-------------------|----------|
|                | AUG30H/<br>AUG30R | AUG36H/<br>AUG36R | AUGHT36H |
| 2000           | 1470              | 1820              | 2230     |
| 2500           | 1835              | 2275              | 2790     |
| 3000           | 2205              | 2730              | 3345     |
| 3500           | 2570              | 3190              | 3905     |

## Output Speed

| Flow Rate (gpm) | Speed (rpm)       |                   |          |
|-----------------|-------------------|-------------------|----------|
|                 | AUG30H/<br>AUG30R | AUG36H/<br>AUG36R | AUGHT36H |
| 10              | 42                |                   |          |
| 12              | 50                |                   |          |
| 14              | 58                |                   |          |
| 16              | 67                | 54                | 44       |
| 18              | 75                | 61                | 50       |
| 20              |                   | 67                | 55       |
| 22              |                   | 74                | 61       |
| 24              |                   | 81                | 66       |
| 27              |                   |                   | 74       |

## Bolt Torque Chart

| SIZE  | GRADE 5 |      | GRADE 8 |      | SHCS*  |      |
|-------|---------|------|---------|------|--------|------|
|       | COARSE  | FINE | COARSE  | FINE | COARSE | FINE |
| 1/4"  | 6       | 7    | 9       | 10   | 10     | 12   |
| 5/16" | 13      | 15   | 18      | 20   | 22     | 24   |
| 3/8"  | 23      | 26   | 33      | 37   | 38     | 43   |
| 7/16" | 37      | 41   | 52      | 58   | 61     | 68   |
| 1/2"  | 57      | 64   | 80      | 90   | 93     | 105  |
| 9/16" | 82      | 91   | 115     | 128  | 134    | 150  |
| 5/8"  | 113     | 128  | 159     | 180  | 179    | 202  |
| 3/4"  | 200     | 223  | 282     | 315  | 317    | 354  |

\*SHCS—Socket Head Cap Screw

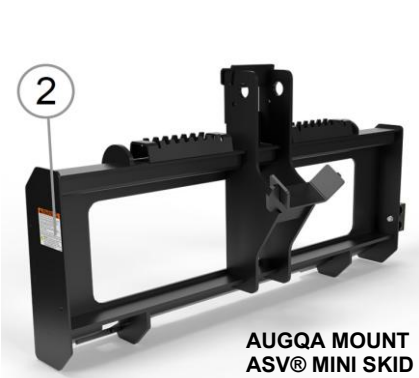
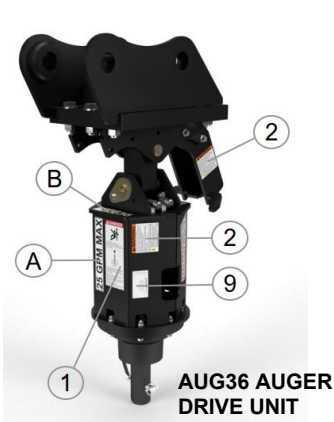
Values are lubricated conditions in ft.-lb. and are recommended unless otherwise noted.

## Auger Drive Labels Parts List

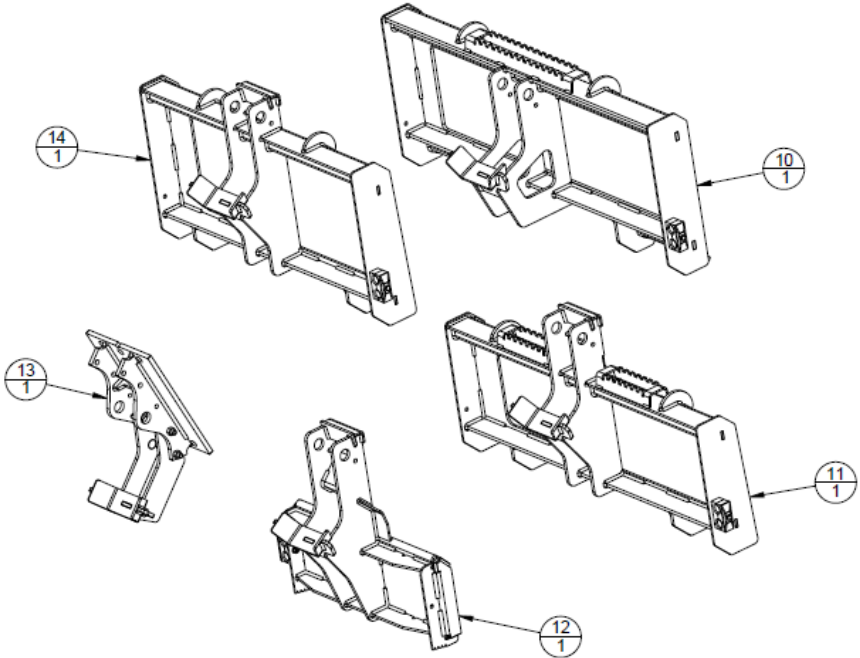
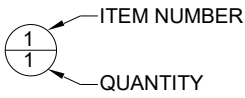
| ITEM | PART NO. | QTY     | DESCRIPTION |                         |
|------|----------|---------|-------------|-------------------------|
|      | 1        | 14997PP | 2           | AUGER DANGER            |
|      | 2        | 5265PP  | 4           | HYDRAULIC WARNING LABEL |
| A    | 3        | 14972PP | 2           | 18 GPM MAX-MINI         |
| A    | 4        | 12836PP | 2           | 25 GPM MAX-MINI         |
| A    | 5        | 15694PP | 2           | 27 GPM MAX-MINI         |
| B    | 6        | 15691PP | 2           | AUGER DECAL AUG30       |
| B    | 7        | 15692PP | 2           | AUGER DECAL AUG36       |
| B    | 8        | 15738PP | 2           | AUGER DECAL AUGHT36     |
|      | 9        | 18333PP | 1           | BAD BOY SERIAL TAG      |

A,B – Only one needed depending on the configuration.

# Auger Drive Label Locations



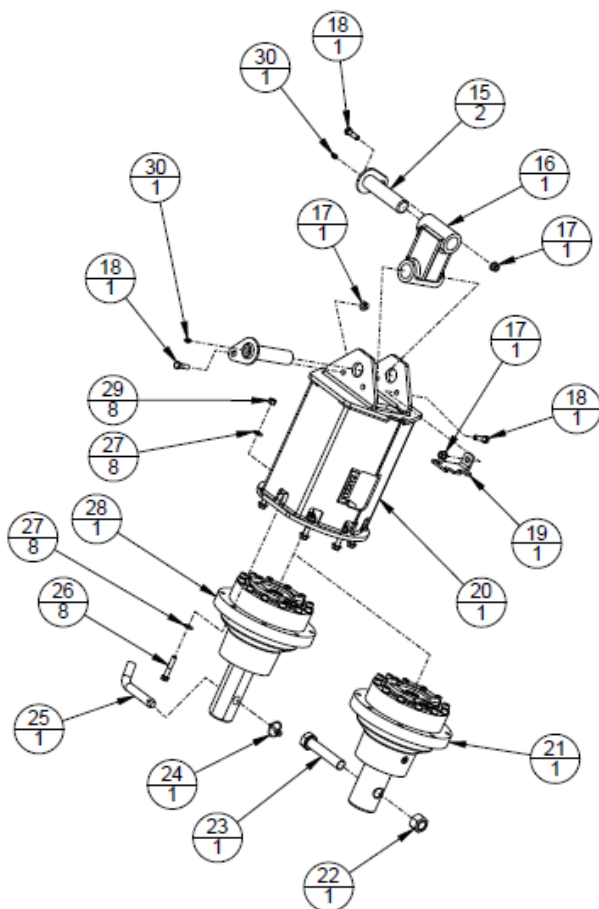
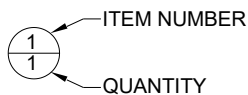
# Interface Components



|   | ITEM | PART NO. | QTY | DESCRIPTION                      |
|---|------|----------|-----|----------------------------------|
| A | 10   | AUGQL    | 1   | AUGER UNIVERSAL SKID STEER MOUNT |
| A | 11   | AUGQA    | 1   | AUGER ASV MINI MOUNT             |
| A | 12   | AUGQS    | 1   | AUGER UNIVERSAL MINI MOUNT       |
| A | 13   | AUGQX    | 1   | AUGER MINI-EXCAVATOR MOUNT       |
| A | 14   | AUGQB    | 1   | AUGER BOBCAT MINI MOUNT          |

A – Only one mount is needed depending on the configuration.

# Drive Assembly – AUG30H, AUG30R, AUG36H, and AUG36R



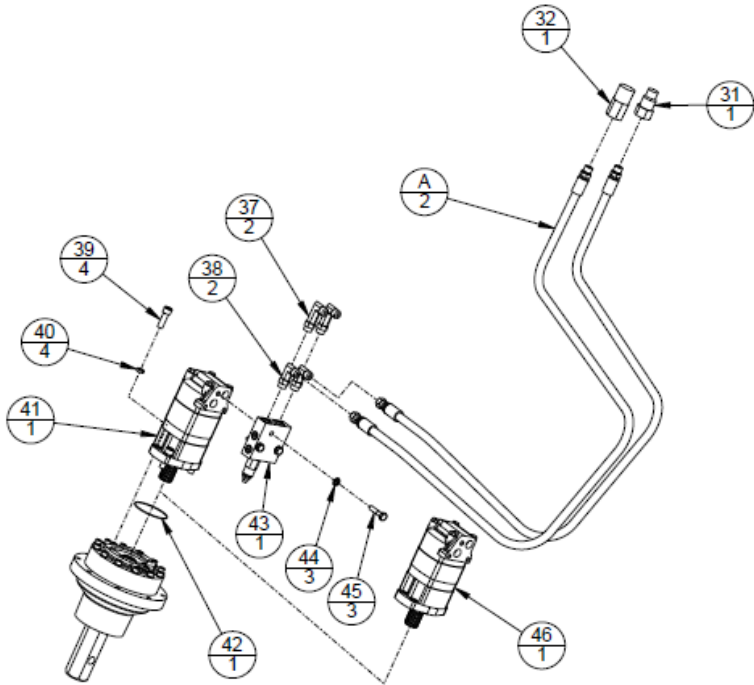
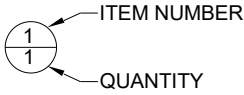
# Drive Assembly – AUG30H, AUG30R, AUG36H, and AUG36R Parts List

| ITEM | PART NO. | QTY     | DESCRIPTION |                                    |
|------|----------|---------|-------------|------------------------------------|
|      | 15       | 7811VW  | 2           | DMP CYLINDER END PIN WELDMENT      |
|      | 16       | 14188VW | 1           | AUGER DRIVE NARROW KNUCKLE WDT     |
|      | 17       | 6140PP  | 3           | 3/8"-16 TOP LOCK FLANGE NUT        |
|      | 18       | 7850PP  | 3           | 3/8"-16 X 1 1/4" LG HHCS           |
|      | 19       | 15629VP | 1           | XAD -08 ELBOW SUPPORT FORMED       |
|      | 20       | 14191VW | 1           | AUGER DRIVE AUBURN CAN WDT         |
| A    | 21       | 14167PP | 1           | PLANETARY AUGER 2 9/16" ROUND      |
| A    | 22       | 14813PP | 1           | 7/8"-9 TOP LOCK NUT                |
| A    | 23       | 14812PP | 1           | 7/8"-9 X 4 1/2" LG HHCS GR8        |
| B    | 24       | 6723PP  | 1           | 3/16" X 1" LG LYNCH PIN            |
| B    | 25       | 6722PP  | 1           | 3/4" X 4" LG BENT LEG PIN          |
|      | 26       | 14810PP | 8           | 3/8"-24 X 2" LG HHCS GR8           |
|      | 27       | 13724PP | 16          | 3/8" SAE FLAT WASHER THRU HARDENED |
| B    | 28       | 14166PP | 1           | PLANETARY AUGER 2" HEX             |
|      | 29       | 14171PP | 8           | 3/8"-24 LOCK NUT                   |
|      | 30       | 1034PP  | 2           | 1/4"-28 STRAIGHT GREASE ZERK       |

A – Items are used for AUG30R and AUG36R models only.

B – Items are used for AUG30H and AUG36H models only.

# Hydraulic Assembly- AUG30H, AUG30R, AUG36H and AUG36R



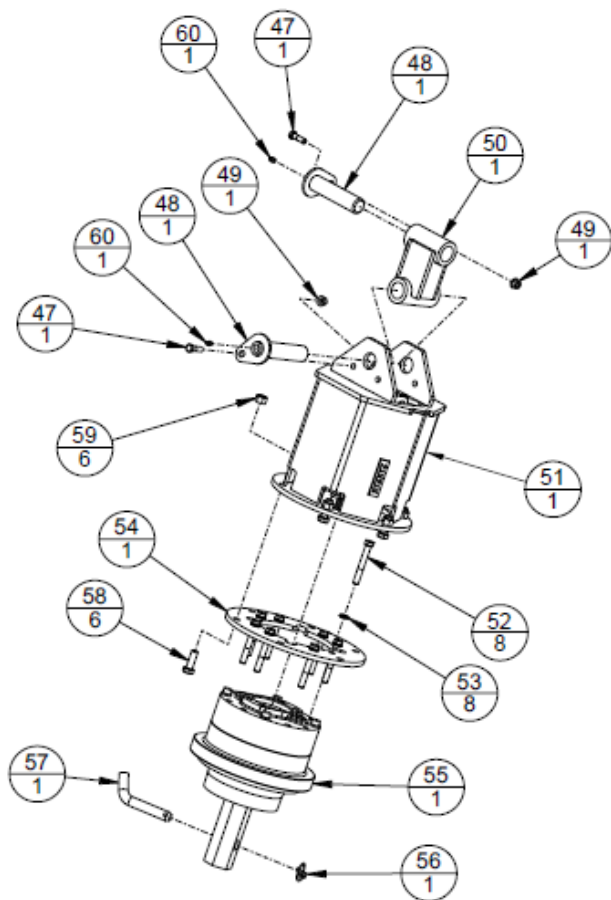
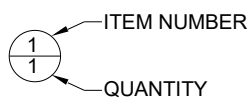
- Item #39 to be installed with Loctite 592 or equivalent.
- Add 25 oz. of SAE 80W-90 gear lubricant to planetary before installing motor.
- Male Coupler (Item #31) plumbed to Manifold Port "A", Female Coupler (Item #32) plumbed to Manifold Port "B".
- Bobcat and ASV Compact Utility Loader hoses always plumbed to the left side of interface frame.

# Hydraulic Assembly- AUG30H, AUG30R, AUG36H and AUG36R Parts List

| ITEM | PART NO. | QTY     | DESCRIPTION        |  |
|------|----------|---------|--------------------|--|
|      | 8495PP   | 1       | COUPLER MALE 8FB   |  |
|      | 8494PP   | 1       | COUPLER FEMALE 8FB |  |
| A    | 33       | 14814PP | 2                  | HYD HOSE 1/2" X 64" LG 8FJX TO 8MB W/SLEEVE  |
| A    | 34       | 15118PP | 2                  | HYD HOSE 1/2" X 84" LG 8FJX TO 8MB W/SLEEVE  |
| A    | 35       | 15119PP | 2                  | HYD HOSE 1/2" X 76" LG 8FJX TO 8MB W/SLEEVE  |
| A    | 36       | 14176PP | 2                  | HYD HOSE 1/2" X 108" LG 8FJX TO 8MB W/SLEEVE |
|      | 37       | 15117PP | 2                  | ELBOW 90 EXTRA LONG 8MB TO 8MJ               |
|      | 38       | 15116PP | 2                  | ELBOW 90 LONG 8MB TO 8MJ                     |
|      | 39       | 6719PP  | 4                  | 1/2"-13 X 1 1/2" LG SHCS                     |
|      | 40       | 6720PP  | 4                  | 1/2" HI-COLLAR LOCK WASHER                   |
|      | 41       | 14163PP | 1                  | MOTOR AUGER DRIVE 18.6                       |
|      | 42       | 6730PP  | 1                  | O-RING FOR AUGER                             |
|      | 43       | 14165PP | 1                  | MANIFOLD AUGER SINGLE CAVITY                 |
|      | 44       | 13006PP | 3                  | M10 LOCK WASHER                              |
|      | 45       | 14811PP | 3                  | M10-1.5 X 45 MM LG HHCS C 10.9               |
|      | 46       | 14164PP | 1                  | MOTOR AUGER DRIVE 15.0                       |

A – Only one set of hoses is needed depending on the configuration.

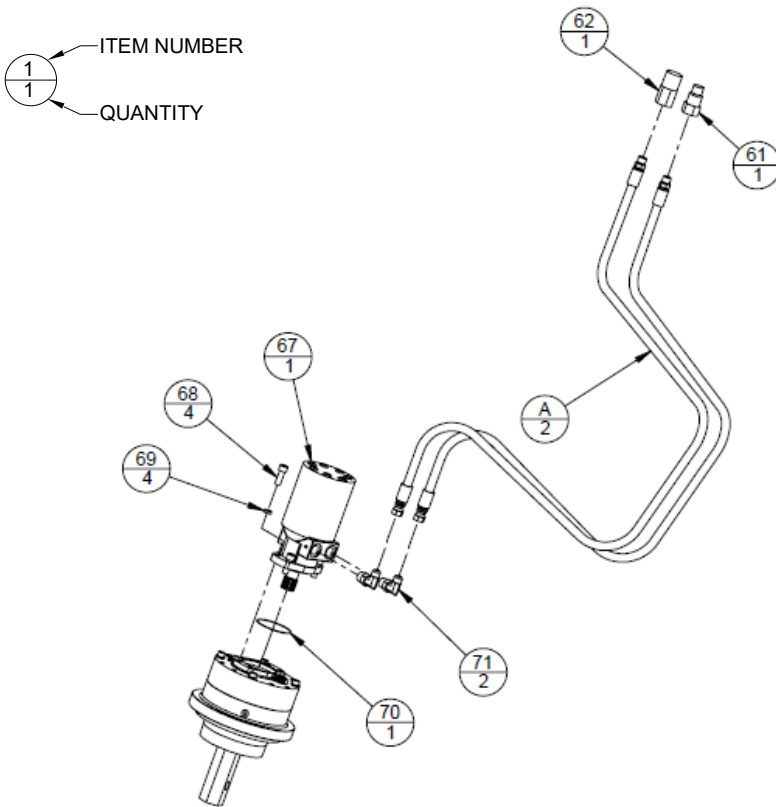
# Drive Assembly-AUGHT36H



## Drive Assembly-AUGHT36H Parts List

| ITEM | PART NO. | QTY | DESCRIPTION                    |
|------|----------|-----|--------------------------------|
| 47   | 7850PP   | 2   | 3/8"-16 X 1 1/4" LG HHCS       |
| 48   | 7811VW   | 2   | DMP CYLINDER END PIN WELDMENT  |
| 49   | 6140PP   | 2   | 3/8"-16 TOP LOCK FLANGE NUT    |
| 50   | 14188VW  | 1   | AUGER DRIVE NARROW KNUCKLE WDT |
| 51   | 14197VW  | 1   | AUGER DRIVE HI TORQUE CAN WDT  |
| 52   | 10415PP  | 8   | 7/16"-20 X 3 1/2" LG HHCS GR8  |
| 53   | 7333PP   | 8   | 7/16" LOCK WASHER              |
| 54   | 10578VP  | 1   | ADV ADAPTER RING               |
| 55   | 10564PP  | 1   | PLANETARY ADV ESKRIDGE         |
| 56   | 6723PP   | 1   | 3/16" X 1" LG LYNCH PIN        |
| 57   | 6722PP   | 1   | 3/4" X 4" LG BENT LEG PIN      |
| 58   | 9998PP   | 6   | 1/2"-20 X 1 1/2" LG HHCS GR8   |
| 59   | 10080PP  | 6   | 1/2"-20 TOP LOCK NUT           |
| 60   | 1034PP   | 2   | 1/4"-28 STRAIGHT GREASE ZERK   |

# Hydraulic Assembly- AUGHT36H



- Add 32 oz. of SAE 80W-90 gear lubricant to planetary before installing motor.
- Male Coupler (Item #61) plumbed to Motor Port "A", Female Coupler (Item #62) plumbed to Motor Port "B".
- Bobcat and ASV Compact Utility Loader hoses always plumbed to the left side of interface frame.

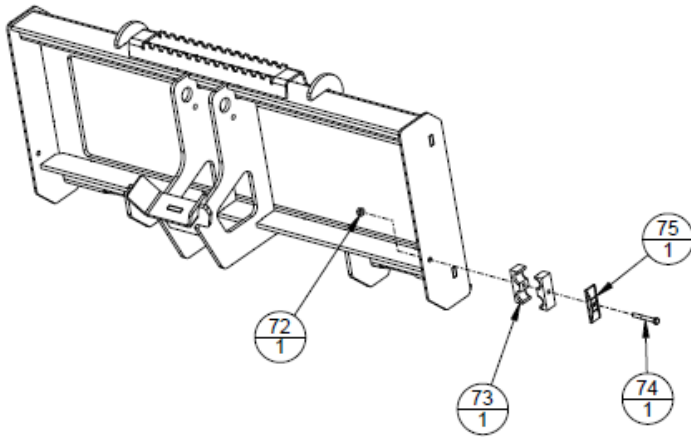
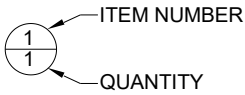
# Hydraulic Assembly – AUGHT36H Parts List

| ITEM | PART NO. | QTY     | DESCRIPTION |  |
|------|----------|---------|-------------|--|
|      | 61       | 8495PP  | 1           | COUPLER MALE 8FB                             |
|      | 62       | 8494PP  | 1           | COUPLER FEMALE 8FB                           |
| A    | 63       | 14814PP | 2           | HYD HOSE 1/2" X 64" LG 8FJX TO 8MB W/SLEEVE  |
| A    | 64       | 15118PP | 2           | HYD HOSE 1/2" X 84" LG 8FJX TO 8MB W/SLEEVE  |
| A    | 65       | 15119PP | 2           | HYD HOSE 1/2" X 76" LG 8FJX TO 8MB W/SLEEVE  |
| A    | 66       | 14176PP | 2           | HYD HOSE 1/2" X 108" LG 8FJX TO 8MB W/SLEEVE |
|      | 67       | 14206PP | 1           | MOTOR HIGH TORQUE AUGER DRIVE                |
|      | 68       | 13866PP | 4           | 1/2"-13 X 1 3/8" LG SHCS                     |
|      | 69       | 6720PP  | 4           | 1/2" HI-COLLAR LOCK WASHER                   |
|      | 70       | 6730PP  | 1           | O-RING FOR AUGER                             |
|      | 71       | 10418PP | 2           | ELBOW 90 8MJ TO 10MB                         |

A – Only one set of hoses is needed depending on the configuration.

# Hose Clamp Installation

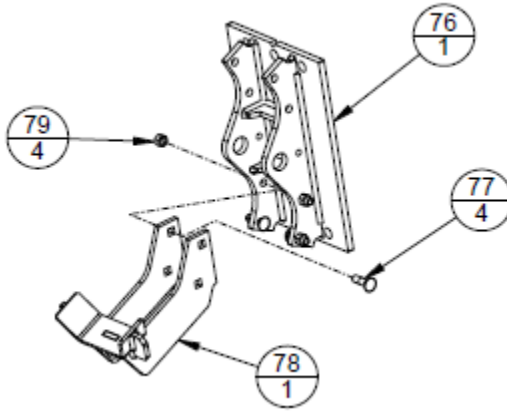
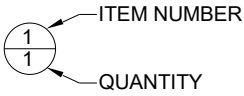
Used with interfaces AUGQA, AUGQB, AUGQL and AUGQS.



| ITEM | PART NO. | QTY | DESCRIPTION                  |
|------|----------|-----|------------------------------|
| 72   | 7672PP   | 1   | 5/16"-18 TOP LOCK FLANGE NUT |
| 73   | 10654PP  | 1   | HOSE CLAMP INSERT 1/2"       |
| 74   | 8736PP   | 1   | 5/16"-18 X 2 1/2" LG HHCS    |
| 75   | 10655PP  | 1   | HOSE CLAMP TOP PLATE 1/2"    |

# Mini Excavator Interface Assembly

Components of AUGQX.



| ITEM | PART NO. | QTY | DESCRIPTION                 |
|------|----------|-----|-----------------------------|
| 76   | 15622VW  | 1   | XAD FRAME WDT               |
| 77   | 8986PP   | 4   | 1/2"-13 X 1 3/4" LG CB      |
| 78   | 15623VW  | 1   | XAD CRADLE WDT              |
| 79   | 15083PP  | 4   | 1/2"-13 TOP LOCK FLANGE NUT |

