



RECON ATTACHMENTS
MINI SKID STEER ANGLE BROOM
OWNER'S OPERATOR SERVICE MANUAL

For additional information, please see us at
www.badboycountry.com



Owners/Operators Manual

Model Number _____

Serial Number _____

Serial Numbers 306481 and Greater
Date Created 05/07/26
Revised Date 05/07/26

Warranty Statement

1. WHAT THIS WARRANTY COVERS, AND FOR HOW LONG:

Bad Boy Mowers, LLC will, at its option, repair or replace without charge, any part covered by the warranty which is found to be defective in material and/or workmanship for one (1) year after the date of sale to the original retail purchaser **unless the product is used for rental purposes, in which case there is no warranty.**

At Bad Boy Mowers, LLC's request, customer will make the defective part available for inspection by Bad Boy Mowers, LLC and/or return the defective part to Bad Boy Mowers, LLC, with **transportation charges prepaid.**

2. WHAT THIS WARRANTY DOES NOT COVER:

- A. This warranty does not cover defects caused by depreciation or damage caused by normal wear, accidents, improper maintenance, improper use or abuse of the product, alterations, or failure to follow the instructions contained in the Owner's Manual for operation and maintenance.
- B. The customer shall pay any charges for making service calls and/or for transporting the implement to and from the place where the inspection and/or warranty work is performed. Bad Boy Mowers, LLC will not be responsible for the pickup and delivery of the implement for warranty purposes.
- C. Normal maintenance services or normal deterioration of exterior finish due to use or exposure.
- D. Replacement of services and items are subject to normal service replacement.

3. HOW TO OBTAIN SERVICE UNDER THIS WARRANTY:

- A. Warranty service can be arranged by contacting the dealer where you purchased the implement or by sending an email to warranty@badboycountry.com. Proof of the date of purchase may be required to verify warranty coverage. Warranty repairs must be completed by an authorized Bad Boy center.
- B. Warranty claims will not be reviewed or paid unless the warranty registration is received by Bad Boy Mowers, LLC within 30 days of the retail purchase date.
- C. Warranty claims requiring parts returned will be settled upon return of parts to Bad Boy for inspection.
- D. All warranty issues must be handled through an authorized service center or dealership.

4. **WARRANTY LIMITATION:**

A. **THERE IS NO OTHER EXPRESS WARRANTY. ANY WARRANTY THAT MAY BE IMPLIED FROM THIS PURCHASE, INCLUDING MERCHANTABILITY AND FITNESS FOR A PARTICULAR PURPOSE IS HEREBY LIMITED TO THE DURATION OF THIS WARRANTY AND TO THE EXTENT PERMITTED BY LAW. ANY AND ALL IMPLIED WARRANTIES ARE EXCLUDED.** Some states do not allow limitations on how long an implied warranty lasts, so the above limitations may not apply to you.

B. **BAD BOY MOWERS, LLC WILL NOT BE LIABLE FOR ANY INCIDENTAL, CONSEQUENTIAL, OR SPECIAL DAMAGES AND/OR EXPENSES IN CONNECTION WITH THE PURCHASE OR USE OF THE IMPLEMENT.** Some states do not allow the exclusion or limitation of incidental or consequential damages, so the above limitation(s) or exclusion(s) may not apply to you.

C. Only the warranty expressed in this limited warranty shall apply and no dealer, distributor, or individual is authorized to amend, modify, or extend this warranty in any way. Accordingly, additional statements such as dealer advertising or presentations, whether oral or written, do not constitute warranties by Bad Boy Mowers, LLC and should not be relied on.

D. This warranty extends only to implement operated under normal conditions and properly serviced and maintained. The warranty expressly does not cover (i) any defects, damage, or deterioration due to normal use, wear and tear, or exposure; (ii) normal maintenance services; (iii) damage or defects arising out of or relating to misuse, neglect, alteration, negligence, or accident; (v) repair or replacement arising from operation of or use of the implement which is not in accordance with operating instructions as specified in the Operator's Manual or other operational instructions provided by Bad Boy Mowers, LLC; (vi) repair or replacement arising as a result of any operation from implement that has been altered or modified so as to, indetermination of Bad Boy Mowers, LLC, adversely affect the operation, performance, or durability of the implement or that has altered, modified, or affected the implement so as to change the intended use of the product; (vii) repair or replacement necessitated by use of parts, accessories, or supplies, including gasoline, oil, or lubricants that are incompatible with the implement or other than as recommended in the Operator's Manual or other operational instructions provided by Bad Boy Mowers, LLC; (viii) repairs or

replacements resulting from parts or accessories which have adversely affected the operation, performance, or durability of the implement; or (ix) damage or defects due to or arising out of repair of implement by person or persons other than an authorized Bad Boy Mowers, LLC service dealer or the installation of parts other than genuine Bad Boy Mowers, LLC recommended parts. **As a condition of this warranty, customer shall have read the Operator's Manual and ensured the implement has been registered within 30 days of purchase.**

- E. This warranty gives you specific legal rights, and you may also have other rights, which vary from state to state.

**BAD BOY MOWERS, LLC
102 INDUSTRIAL DRIVE
BATESVILLE, AR 72501**

WWW.BADBOYCOUNTRY.COM

Technical Support:.....techsupport@badboycountry.com
Warranty:.....warranty@badboycountry.com
Parts:.....partsdept@badboycountry.com

Warranty Registration

Ensure selling dealership has registered the implement within 30 days of purchase to validate warranty. Please record the serial number, date of purchase, and dealership information for your records.

Serial # _____

Date of Purchase _____

Dealer Information _____

Features of Bad Boy Compact Angle Broom include:

- Centering swing linkage maintains full track coverage for wide track machines while angling.
- Optional Hydraulic Angle with Electric Control utilizes either the machines electrical package or an add-on control box.
- Optional Hydraulic Angle for loaders with two auxiliary circuits.
- 10 – 18 gpm operating flow rate range and 2000 – 3800 psi operating pressure range.
- Easy exchange of wafers, do not have to disconnect hydraulic lines to change wafer sections.
- Hydraulic pressure relief provides hydraulic protection while rotating in either direction.
- Direct drive design with replaceable drive components.
- 165° standard hood coverage.
- Recommended for loaders with operating capacity greater than 500 lb.

Compact Angle Broom Specs



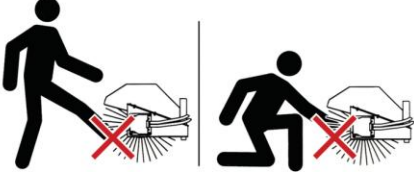
MODEL	CAB48	CAB60
Sweeping Width, Straight (Inches)	48.0	60.0
Sweeping Width, Full Angle (Inches)	42.8	53.5
Overall Width (Inches)	54.3	66.3
Overall Width, Full Angle (Inches)	58.5	68.5
Max Broom Angle (Degrees)	28.0	
Number of 26 Inch Diameter Wafers	23	29.0
Recommended Flow Rate (GPM)	10-18 Standard Flow Only	
Approximate Weight (Pounds)	495 ¹	530 ¹
Recommended Loader Capacity	Greater than 500 pounds	

¹Bobcat® mount adds 25 pounds to model weight, and ASV® mount adds approximately 30 pounds.

Safety

- Always follow safety and operating information in this manual.
- Always follow all safety and operating instructions of the loader.
- Never remove material deflectors or warning labels.
- Never operate Compact Angle Broom unless you have been properly trained.
- Make sure all safety labels are in place, look in this manual for their locations.
- Do not sweep toward people, buildings, etc. that may be injured or damaged by flying debris.
- Clean any debris from attachment. Pay special attention to any debris in quick-tach area.

Compact Angle Broom Labels

 DANGER	
 <p>FLYING OBJECT HAZARD</p> <ul style="list-style-type: none">• Keep bystanders 50 feet away during operation.• Avoid or remove objects that could be thrown by broom.• Do not operate without all guards properly installed.• Failure to follow these instructions could result in injury or death.	 <p>ROTATIONAL HAZARD</p> <ul style="list-style-type: none">• Keep hands and feet away from rotary broom while in operation or with engine running.• Stop engine and wait for all movement to stop before cleaning or maintaining.• See additional safety and operational instructions in Owner's Manual.• Failure to follow these instructions could result in injury or death.

8682PP – BROOM DANGER LABEL

Compact Angle Broom Labels (cont.)

⚠ WARNING


- NEVER use hands to check for oil leaks.
- ALWAYS relieve pressure before disconnecting hoses.
- ALWAYS disconnect hoses before performing any maintenance on broom.
- Attachment must be securely latched to loader.
- Before leaving operator's station, lower lift arms to stops, disengage hydraulics, stop engine, engage parking brake and make sure all rotation has stopped.
- Check for loose or broken parts before operating, repair as needed.
- Avoid stalling broom. Continued stalling will overheat hydraulic system.
- ALWAYS follow loader safety and operating instructions.
- Stay back 50 feet during operation.
- See additional safety and operational instructions in Owner's Manual.
- Read and understand all operating and safety instructions in Owner's Manual before operating.
- Failure to follow these instructions could result in injury or death.

⚠ WARNING: This product can expose you to chemicals including Cadmium, which is known to the State of California to cause cancer and birth defects or other reproductive harm. For more information go to www.P65Warnings.ca.gov.

8681PP

8681PP – BROOM WARNING LABEL

⚠ WARNING



CRUSH HAZARD

- Stay back 50 feet during operation.
- Failure to follow this instruction could result in injury or death.

5264PP

5264PP – CRUSH HAZARD WARNING LABEL

⚠ WARNING



PINCH POINT

- Keep hands clear during operation.
- Always shut off loader and relieve pressure before inspecting or repairing.
- Failure to follow these instructions could result in injury or death.

5263PP

5263PP – PINCH POINT WARNING LABEL

Initial Use

- Read and understand all warning information in this manual before operating this attachment.
- Check that quick-tach on frame fits onto loader properly. Pins must engage through plates at bottom of quick-tach.
- Slowly roll back attachment. Make sure there is no interference between attachment and loader.
- Make sure hoses do not pinch during roll back.
- Never exceed the maximum attachment operating pressure of 3800 psi.
- After the Compact Angle Broom is mounted to the loader, lift or roll back the Compact Angle Broom so the storage stands are not contacting the ground. Flip storage stands into “storage” position before operation of the Compact Angle Broom.
- With the Compact Angle Broom off of the ground, engage the auxiliary hydraulics using the “detent” position on the machine. Check the rotation of the broom (broom should be sweeping away from the machine.) If this rotation does not match the “detent” position of your machine, switch the couplers on the lead hoses.
- If the Compact Angle Broom is equipped with manual angle, swing the broom head through its cycle to check that the lead hoses do not bind or catch anywhere. Make sure the broom is not operating and the machine is shut off when changing the broom angle manually.
- If the Compact Angle Broom is equipped with hydraulic angle with Electric Control, with the broom running in the sweeping direction, engage the electrical controls and cycle the broom head from side to side and check that the lead hoses do not bind or catch anywhere. Broom will not angle when the broom is running in reverse.
- If the Compact Angle Broom is equipped with hydraulic angle for loaders with two auxiliary hydraulic circuits, the angle function can be used at any time. Make sure to connect the hoses for the drive motor and the hoses for the angle cylinder to the proper couplers on the loader.
- Do not store the Compact Angle Broom with weight on the wafers as this may deform the bristles reducing the sweeping effectiveness. Use the storage stands to support the weight of the broom head.

Operation

- Always relieve hydraulic pressure before connecting or disconnecting hydraulic hoses.
- The Compact Angle Broom is designed to be operated so that the brush sweeps debris away from the operator (brush spins clockwise when looking from the motor end). The brush will spin in the opposite direction, sweeping debris toward the loader, care should be taken.

Sweeping Recommendations

- Sweep with the wind whenever possible to provide more efficient operation and keep debris off of the operator.
- When sweeping on rough terrain, reduce machine ground speed to minimize “bouncing” of broom head.
- Debris direction can be controlled by angling the broom head.
- Avoid excessive down pressure on the broom head. Brooms sweep with the tips of the wafers; therefore, the sweeping contact pattern should be about 2”-4”. Unnecessary down pressure promotes excessive wear and premature failure of wafers. The weight of the broom head should provide adequate down pressure for sweeping.
- When sweeping snow, increase brush speed and decrease travel speed. This allows the snow to be removed effectively. In heavy or deep snow, use multiple passes to clear the snow.
- If equipped, loader boom float may be used.

Compact Angle Broom Speed

FLOW RATE (gpm)	SPEED (rpm)
10	194
12	233
14	272
16	311
18	349

Speeds are the same for all widths.

Maintenance

Procedure	Before Every Use	Every 10 Hours
Grease hinge pins, linkage pins and bearing (8 fittings on Manual Angle, 10 fittings on Hydraulic Angle with Electric Control).	✓	✓
Check for wear on wafers. If the outside diameter of the wafer is one half of the original diameter, the wafers need to be replaced. The original diameter of the wafers for the Compact Angle Broom is 26".	✓	✓
Make sure all safety labels are in place, look in this manual for locations.	✓	✓
Check for loose, worn, or missing parts. Repair or replace as needed.	✓	✓
Remove any foreign debris such as string, wire, etc. that may have wrapped around the brush head.	✓	✓
Inspect motor, manifold(s), hydraulic fittings, and hoses for leaks and damage, replace as needed. Make sure machine is shut off and hydraulic pressure is relieved before checking for leaks. Never use hands to check for high pressure hydraulic leaks.	✓	✓

- The pressure relief valves require no maintenance. The valves are pre-set and require no adjustment. Changing settings may cause damage to the motor. Please call Bad Boy with any questions or problems regarding the pressure relief valves.
- Contact your dealer for any required replacement parts.

Brush Replacement Procedure

- Position Compact Angle Broom so the core and wafers are being supported by the ground.
- Remove the 4 nuts (Item #82, see “Compact Angle Broom Hydraulic Motor Assembly” section) holding the Hydraulic Motor Assembly and remove the Hydraulic Motor Assembly.
- Remove the 4 nuts (Item #67, see “Compact Angle Broom Core and Shaft Assembly” section) holding the Bearing Mount Plate with Bearing. Loosen the two 1/4” Allen head set screws in the bearing collar that secure the shaft in the bearing. Then slide the Bearing Mount Plate with Bearing off the shaft.
- The core should be free from the brush head. Lift brush head and remove to expose core.
- Remove the retaining plate (Item #71) from the end of the core (See “Compact Angle Broom Core and Shaft Assembly” section).
- Remove old brush sections. Inspect drive bars for indentations or excessive wear. Replace core cage if damage is evident.

Brush Replacement Procedure (cont.)

- Stand core on end and install the new brush sections making sure the drive pins of the wafer engage one of the core drive bars. For a snug fit, install consecutive wafers so that the drive pins are 180° apart. Start with a poly wafer and alternate between poly and wire wafers until core is full. The last wafer should be poly.
- Reinstall the retaining plate and lay core on the ground. When handling the core, do not use the wafers to move the core.
- Lower Compact Angle Broom brush head over core with new brush sections.
- Reinstall Bearing Mount Plate with Bearing into core and secure with nuts.
- Before reinstalling motor, remove the 3/8" bolt (Item #77, see "Compact Angle Broom Hydraulic Motor Assembly" section) holding the Drive Adapter (Item #79) on the Hydraulic Motor (Item #84) and apply a thin layer of grease to the splines of the motor. Reinstall Drive Adapter to the Hydraulic Motor.
- Reinstall Hydraulic Motor Assembly and secure with nuts.

Manual Angle Operation

- Manual angle operation is achieved with hitch pins located on the centering swing linkage. Angles that are available are straight, 28° right or 28° left.
- To change the angle of the brush head, lift broom head off of the ground, remove the pins, swing the head in the desired direction and reinstall pins. Make sure broom is not rotating and machine is shut off when changing the angle manually.

Optional Hydraulic Angle Operation, Loaders with Two Auxiliary Circuits

- If the loader has two independent circuits, the drive motor and hydraulic angle/cylinder can be started or stopped independently at any time.
- If the loader has a diverter valve at the boom creating the 2 hydraulic circuits, the drive motor needs to come to a stop before actuating the hydraulic angle/cylinder. Hydraulic angle/cylinder motion needs to stop before engaging the drive motor.

Optional Hydraulic Angle with Electric Control Operation

- If the loader has the electrical package (8 pin or 14 pin connector), connect the electrical plug to the plug on the boom arm of the loader when hooking up the attachment to the loader. The angle of the broom should now be controlled by primary electrical switch located in the operator station of the machine.
- If the machine does not have an electrical package, there are 2 options to make the Hydraulic Angle with Electric Controls work. If the machine has a 12-volt accessory plug (cigarette lighter), you can use the optional control box for power. If the machine does not have a 12-volt accessory plug, a 12-volt accessory outlet is available from Bad Boy to connect to the battery of the machine and then utilizes the optional control box.
- In either of the above scenarios, the broom needs to be running in the sweeping direction before the electro-hydraulic angle will function. The hydraulic angle will not work if the broom is running in reverse.

Bolt Torque Chart

SIZE	GRADE 5		GRADE 8		SHCS*	
	COARSE	FINE	COARSE	FINE	COARSE	FINE
1/4"	6	7	9	10	10	12
5/16"	13	15	18	20	22	24
3/8"	23	26	33	37	38	43
7/16"	37	41	52	58	61	68
1/2"	57	64	80	90	93	105
9/16"	82	91	115	128	134	150
5/8"	113	128	159	180	179	202
3/4"	200	223	282	315	317	354

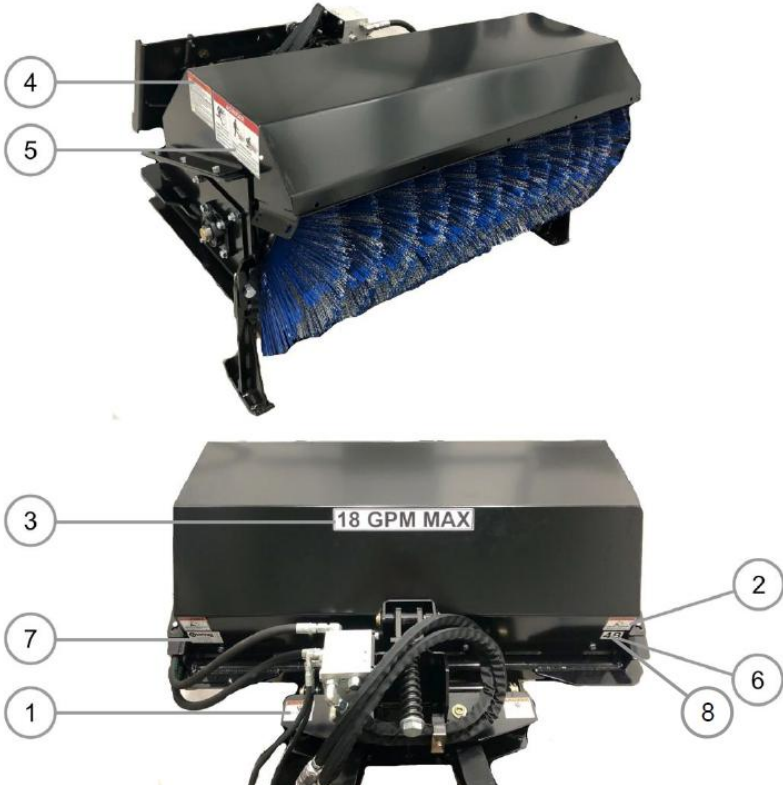
*SHCS—Socket Head Cap Screw

Values are in ft.-lb. and are recommended unless otherwise noted.

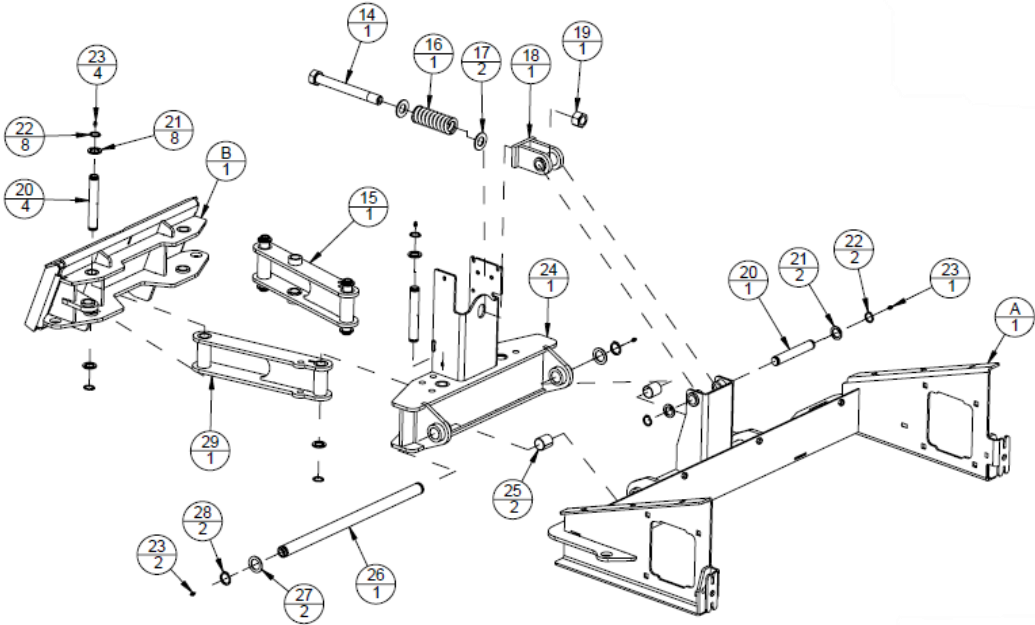
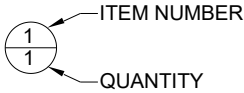
Compact Angle Broom Labels Parts List

Item	Part No.	Qty	Description
1	5263PP	2	PINCH POINT WARNING LABEL
2	5264PP	2	CRUSH HAZRD WARNING LABEL
3	7489PP	1	18 GPM MAX LABEL
4	8681PP	2	BROOM WARNING LABEL
5	8682PP	2	BROOM DANGER LABEL
A	6	10259PP	48 WIDTH LABEL
	7	18333PP	BAD BOY SERIAL TAG
A	8	9392PP	60 WIDTH LABEL

A – Broom supplied with one of each, depending on width.



Compact Angle Broom Linkage Assembly



Compact Angle Broom Linkage Assembly Parts List

CAB48			
ITEM	PART NO.	QTY	DESCRIPTION
A 9	13641VW	1	CAB BROOM FRAME WDT

*This table is model specific.

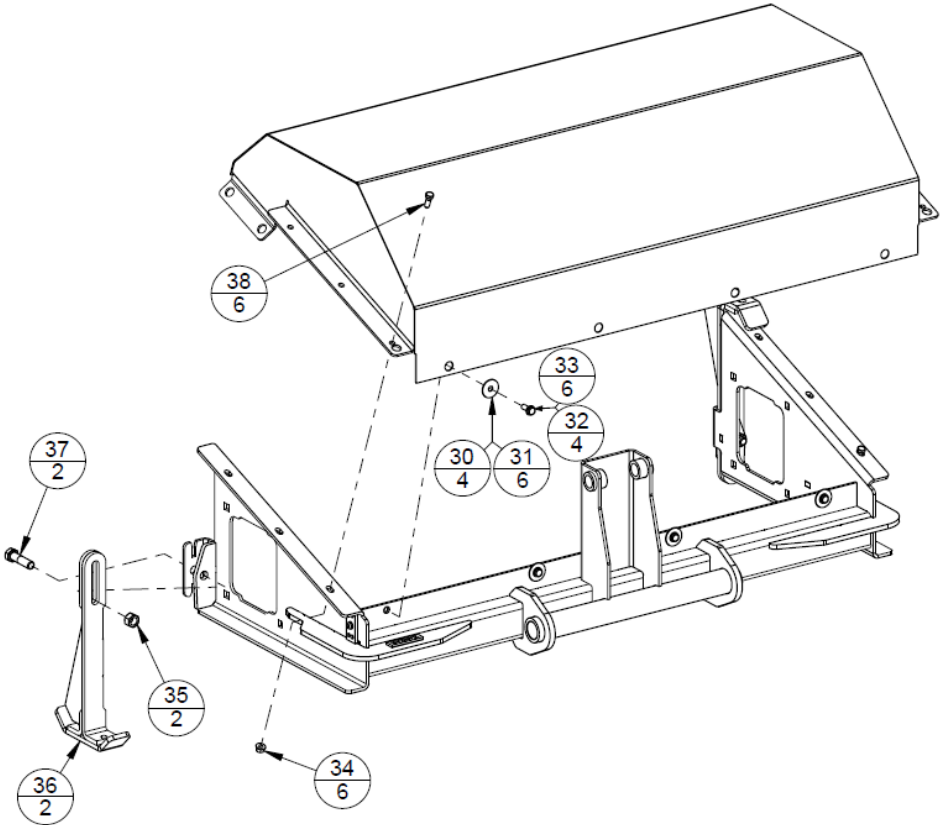
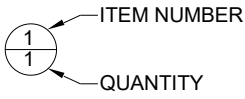
CAB60			
ITEM	PART NO.	QTY	DESCRIPTION
A 10	13654VW	1	CAB BROOM FRAME WDT

*This table is model specific.

	ITEM	PART NO.	QTY	DESCRIPTION
B	11	13648VW	1	CAB STANDARD MINI WDT
B	12	13649VW	1	CAB BOBTACH MINI WDT
B	13	13650VW	1	CAB ASV MINI WDT
	14	7967PP	1	1"-8 X 9" LG HHCS
	15	13646VW	1	CAB LH LINK WDT
	16	7966PP	1	SPRING COMPRESSION ANGLE BROOM
	17	6683PP	2	1" SAE FLAT WASHER
	18	7960VW	1	SPRING RETAINER WELDMENT
	19	7246PP	1	1"-8 TOP LOCK NUT
	20	5093VP	5	HINGE PIN
	21	5146PP	10	1" X 10GA MACHINERY BUSHING
	22	5147PP	10	1" EXTERNAL SNAP RING
	23	1034PP	7	1/4"-28 STRAIGHT GREASE ZERK
	24	13644VW	1	CAB KNUCKLE WDT
	25	1111PP	2	1 1/4" DIA X 1 9/16" LG BUSH
	26	2434VP	1	MANURE GRAPPLE HINGE PIN
	27	1094PP	2	1 1/4" X 10GA MACH BUSHING
	28	1095PP	2	1 1/4" EXTERNAL SNAP RING
	29	13645VW	1	CAB RH LINK WDT

A – Only one is needed depending on the configuration.

Hood and Stand Installation



Hood and Stand Installation Parts List

CAB48			
ITEM	PART NO.	QTY	DESCRIPTION
30	1113PP	4	3/8" X 1 1/2" FENDER WASHER
32	13378PP	4	3/8"-16 X 1" LG HHSFS GR8

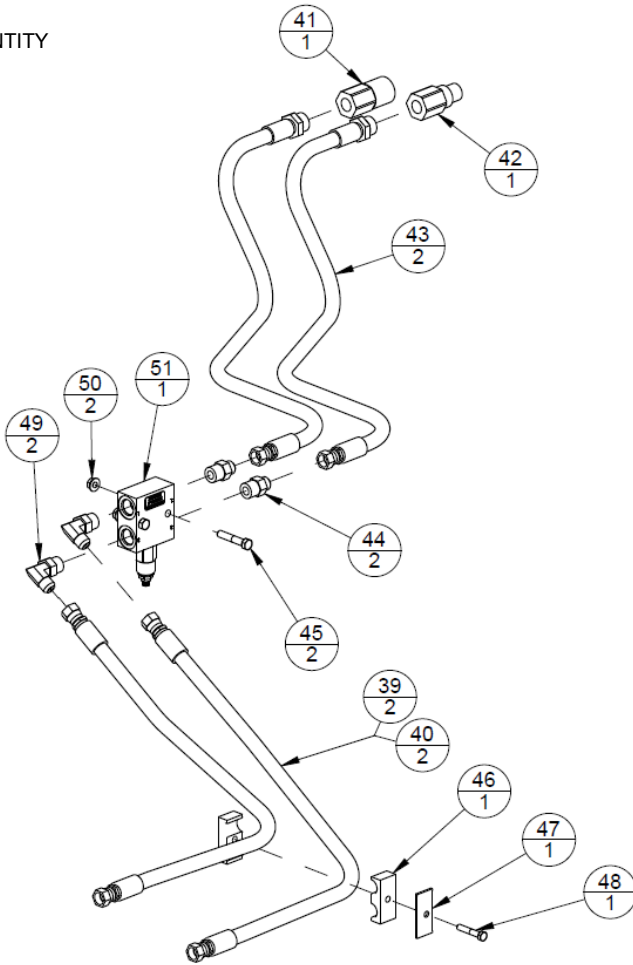
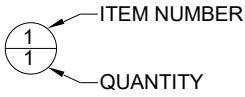
*This table is model specific.

CAB60			
ITEM	PART NO.	QTY	DESCRIPTION
31	1113PP	6	3/8" X 1 1/2" FENDER WASHER
33	13378PP	6	3/8"-16 X 1" LG HHSFS GR8

*This table is model specific.

ITEM	PART NO.	QTY	DESCRIPTION
34	6140PP	6	3/8"-16 TOP LOCK FLANGE NUT
35	1008PP	2	5/8"-11 TOP LOCK NUT
36	13647VW	2	CAB STAND WDT
37	5130PP	2	5/8"-11 X 2 1/2" LG HHCS
38	7849PP	6	3/8"-16 X 1" LG HHCS

Hydraulic Component Assembly



Standard Coupler Assembly

- Connect female coupler (Item #41) to TOP motor port.
- Connect male coupler (Item #42) to BOTTOM motor port.

Hydraulic Component Assembly Parts List

CAB48			
ITEM	PART NO.	QTY	DESCRIPTION
39	13864PP	2	HYD HOSE 1/2" X 38" LG 8FJX TO 8FJX NO SLEEVE

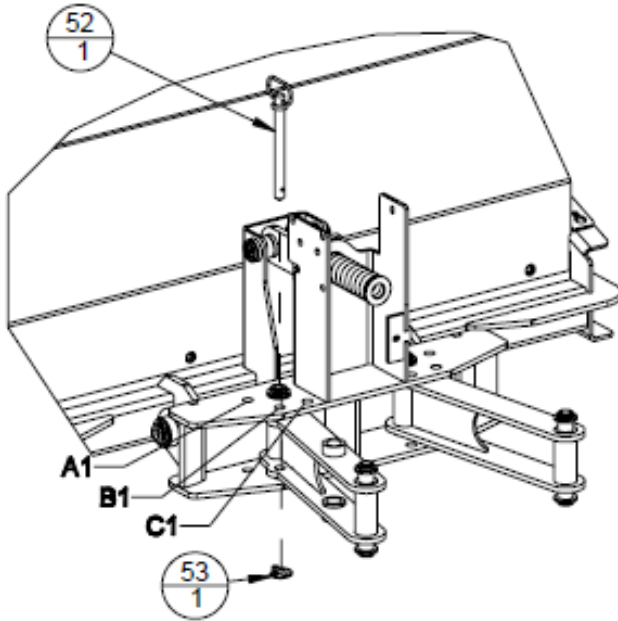
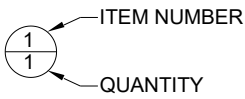
*This table is model specific.

CAB60			
ITEM	PART NO.	QTY	DESCRIPTION
40	13727PP	2	HYD HOSE 1/2" X 44" LG 8FJX TO 8FJX NO SLEEVE

*This table is model specific.

ITEM	PART NO.	QTY	DESCRIPTION
41	8734PP	1	COUPLER FEMALE 12FB CUP
42	8735PP	1	COUPLER MALE 12FB CUP
43	13565PP	2	HYD HOSE 1/2" X 48" LG 12MB TO 8FJX
44	13567PP	2	ADAPTER 8MJ TO 10MB
45	6721PP	2	3/8"-16 X 2 1/4" LG HHCS
46	13785PP	1	INSERT 1/2" NO SLEEVE
47	13786PP	1	CLAMP TOP PLATE 1/2" NO SLEEVE
48	1084PP	1	5/16"-18 X 1 3/4" LG HHCS
49	10418PP	2	ELBOW 90 8MJ TO 10MB
50	6140PP	2	3/8"-16 TOP LOCK FLANGE NUT
51	13008PP	1	CUL CROSS OVER RELIEF

Manual Angle Adjustment



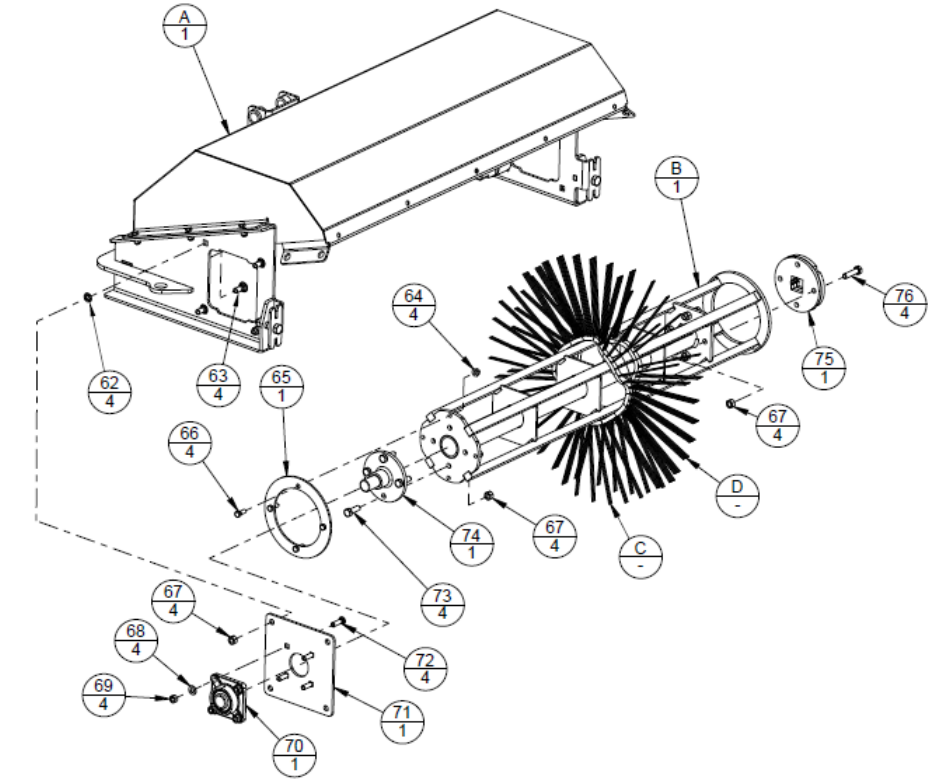
Pin location for various discharge directions:

- Left side discharge: Pin location A1 & A2.
- Right side discharge: Pin location C1 & C2.
- Straight discharge: Pin location B1 & B2.

ITEM	PART NO.	QTY	DESCRIPTION
52	10974PP	1	5/8" X 6 1/2" LG HITCH PIN
53	6723PP	1	3/16" X 1" LG LYNCH PIN

Compact Angle Broom Core and Shaft Assembly

ITEM NUMBER
QUANTITY



Compact Angle Broom Core and Shaft Assembly Parts List

CAB48				
	ITEM	PART NO.	QTY	DESCRIPTION
A	54	13642VW	1	CAB HOOD WDT
B	56	13643VW	1	CAB BROOM CORE WDT
C	58	8478PP	12	WAFER 26 POLY
D	60	8479PP	11	WAFER 26 STEEL

*PWC48 – Poly/Wire Wafer Kit – Includes Item #58 and #60.

*PWP48 – Poly Wafer Kit – Includes Item #58 only.

*This table is model specific.

CAB60				
	ITEM	PART NO.	QTY	DESCRIPTION
A	55	13655VW	1	CAB HOOD WDT
B	57	13656VW	1	CAB BROOM CORE WDT
C	59	8478PP	15	WAFER 26 POLY
D	61	8479PP	14	WAFER 26 STEEL

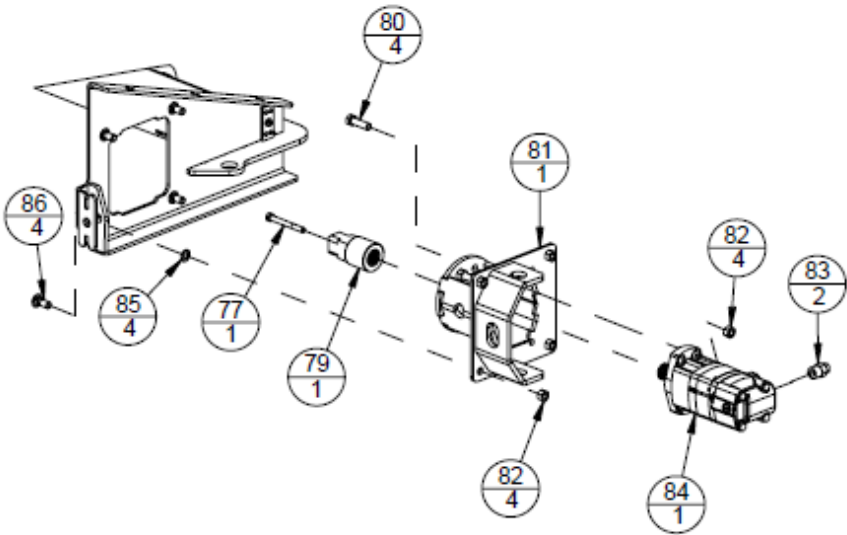
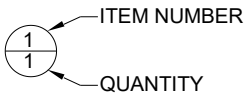
*PWC60 – Poly/Wire Wafer Kit – Includes Item #59 and #61.

*PWP60 – Poly Wafer Kit – Includes Item #59 only.

*This table is model specific.

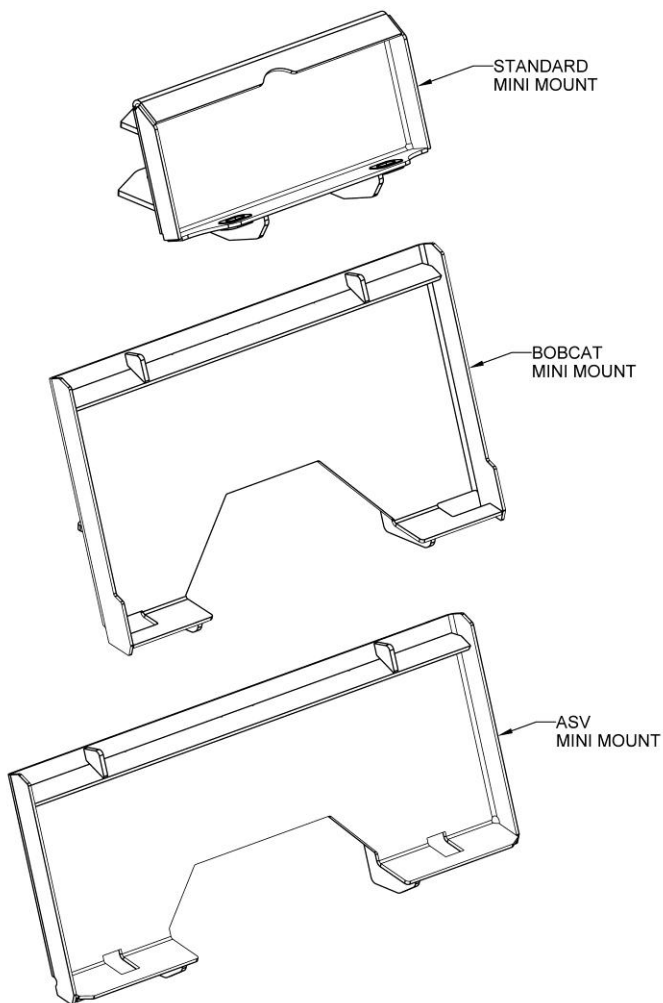
ITEM	PART NO.	QTY	DESCRIPTION
62	7965PP	4	1/2" PUSHNUT BOLT RETAINER
63	7964PP	4	1/2"-13 X 1 1/4" LG CB
64	6140PP	4	3/8"-16 TOP LOCK FLANGE NUT
65	8398VP	1	PICK-UP BROOM CAP MOTOR END
66	7849PP	4	3/8"-16 X 1" LG HHCS
67	1003PP	12	1/2"-13 REVERSE LOCK NUT
68	8679PP	4	7/16" SAE FLAT WASHER
69	1005PP	4	7/16"-14 REVERSE LOCK NUT
70	12396PP	1	1-1/4" BEARING W/4 HOLE FLANGE
71	13699VP	1	CAB IDLER BEARING PLATE
72	17777PP	4	7/16" -14 X 1-1/2" LG CB
73	5226PP	4	1/2"-13 X 1 1/2" LG HHCS
74	13460VW	1	COMPACT IDLER SHAFT WDT
75	10230VW	1	BROOM DRIVE FLANGE WELDMENT
76	5149PP	4	1/2"-13 X 2" LG HHCS

Compact Angle Broom Hydraulic Motor Assembly



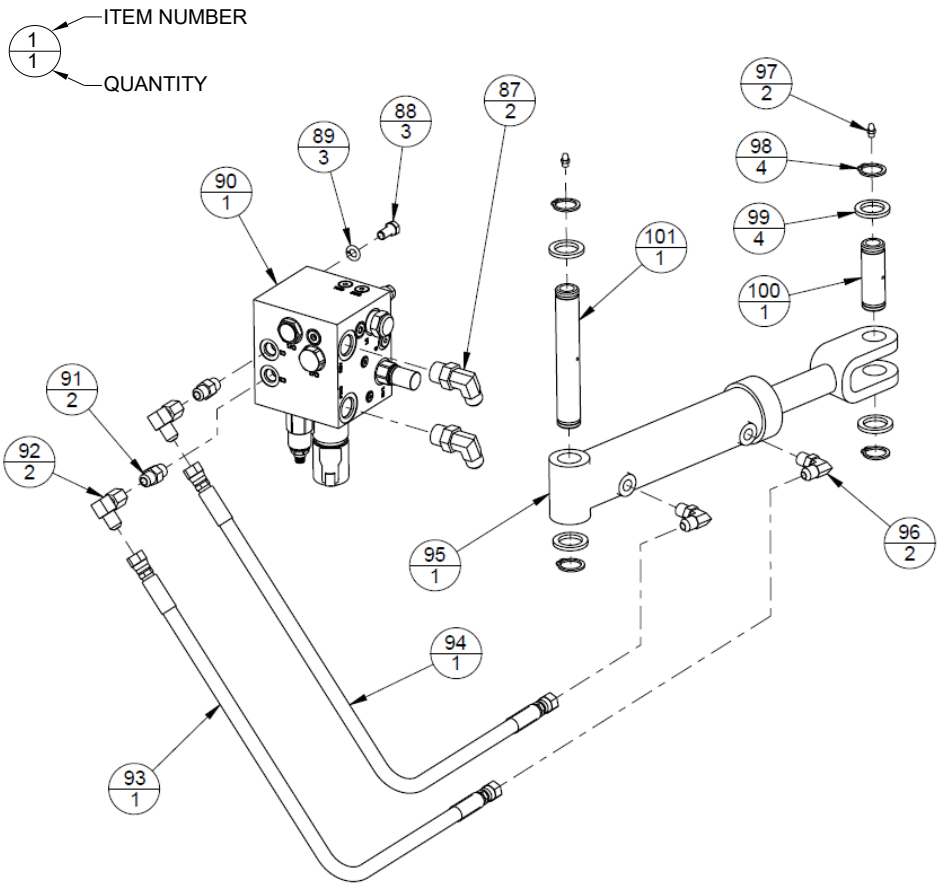
ITEM	PART NO.	QTY	DESCRIPTION
77	6970PP	1	3/8"-16 X 3 1/2" LG HHCS
79	16339VP	1	DRIVE ADAPTER
80	5225PP	4	1/2"-13 X 1 3/4" LG HHCS
81	13652VW	1	COMPACT BROOM MOTOR CAN WDT
82	1003PP	8	1/2"-13 REVERSE LOCK NUT
83	13567PP	2	ADAPTER 8MJ TO 10MB
84	13222PP	1	MOTOR 11.9 CID
85	7965PP	4	1/2" PUSHNUT BOLT RETAINER
86	7964PP	4	1/2"-13 X 1 1/4" LG CB

Optional Mount Weldments



Available Interface Mounts (Item 11, 12, and 13)

Optional Hydraulic Angle Assembly



Standard Hydraulic Angle Connections

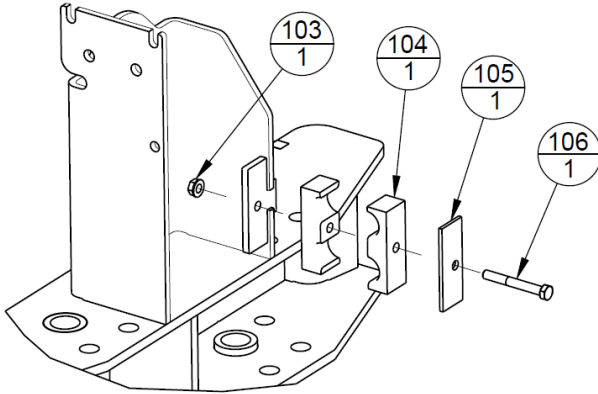
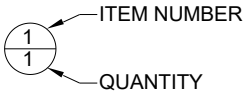
- Manifold port M1 → BOTTOM motor port.
- Manifold port M2 → TOP motor port.
- Manifold port FWD → Male coupler.
- Manifold port REV → Female coupler.
- Manifold port C1 → Barrel end of cylinder.
- Manifold port C2 → Rod end of cylinder.

Optional Hydraulic Angle Assembly Parts List

ITEM	PART NO.	QTY	DESCRIPTION
87	10418PP	2	ELBOW 90 8MJ TO 10MB
88	1116PP	3	3/8"-16 X 3/4" LG HHCS
89	1075PP	3	3/8" LOCK WASHER
90	13020PP	1	CUL MOTOR-CYLINDER MANIFOLD
91	7796PP	2	ADAPTER 6MJ-6MB
92	1012PP	2	ELBOW 90 6FJX TO 6MJ
93	12293PP	1	HYD HOSE 1/4" X 23 1/2" LG 6FJX TO 6FJX
94	12339PP	1	HYD HOSE 1/4" X 31" LG 6FJX TO 6FJX
95	10884PP	1	2" BORE 6" STROKE CYLINDER
96	6997PP	2	ELBOW 90 6MJ TO 6MB
97	1034PP	2	1/4"-28 STRAIGHT GREASE ZERK
98	5147PP	4	1" EXTERNAL SNAP RING
99	5146PP	4	1" X 10GA MACHINERY BUSHING
100	5094VP	1	CYLINDER PIN
101	5093VP	1	HINGE PIN
A 102	14154VA	1	CUL 2 FUNCTION WIRE HARNESS

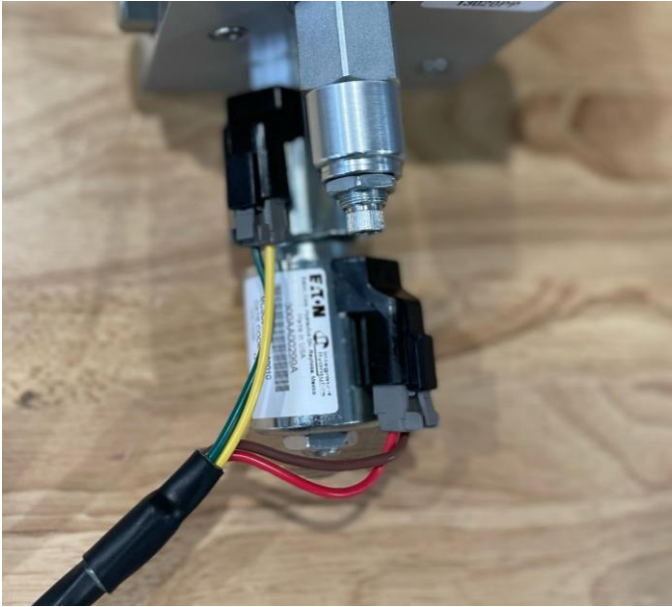
A – 102 is not pictured.

Hydraulic Angle Lead Hose Clamp



ITEM	PART NO.	QTY	DESCRIPTION
103	7672PP	1	5/16"-18 TOP LOCK FLANGE NUT
104	10654PP	1	1/2" HOSE CLAMP HALVES
105	10655PP	1	1/2" HOSE CLAMP TOP PLATE
106	8736PP	1	5/16"-18 X 2 1/2" LG HHCS

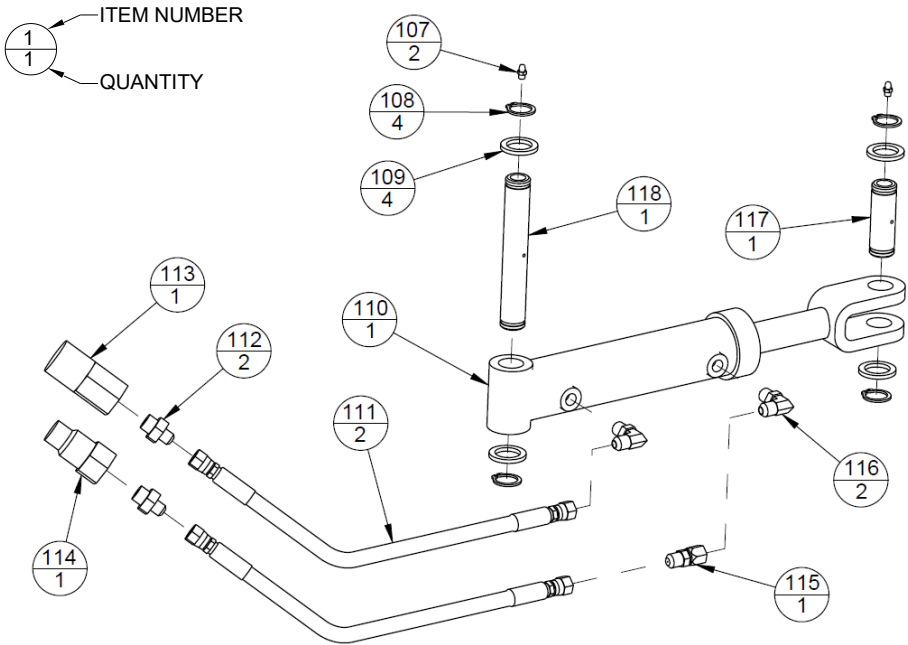
Electrical Harness Connections



Standard Electrical Harness Connections

- Green/Yellow or Green/White, Nearest to Manifold Block.
- Red/Brown or Red/Black, Furthest from Manifold Block.

Optional Hydraulic Angle Assembly Utilizing Second Auxiliary Circuit (In Addition to Standard Hydraulic Assembly)



ITEM	PART NO.	QTY	DESCRIPTION
107	1034PP	2	1/4"-28 STRAIGHT GREASE ZERK
108	5147PP	4	1" EXTERNAL SNAP RING
109	5146PP	4	1" X 10GA MACHINERY BUSHING
110	10884PP	1	2" BORE 6" STROKE CYLINDER
111	12174PP	2	HYD HOSE 1/4" X 46" LG 6FJX TO 6FJX
112	1145PP	2	ADAPTER 6MJ TO 8MB
113	8494PP	1	COUPLER FEMALE 8FB
114	8495PP	1	COUPLER MALE 8FB
115	1132PP	1	1/32" DIA RESTRICTOR FITTING IN LINE 6 JIC
116	6997PP	2	ELBOW 90 6MJ TO 6MB
117	5094VP	1	CYLINDER PIN
118	5093VP	1	HINGE PIN

